

# UNIVERSAL STUDIOS **FABRICATION** & **STAFF SHOP** COLLECTION

Your  
Creative  
Designs  
Achieved  
Through  
Experienced  
Hollywood  
Craftsmanship

## Building on a hundred year tradition of Hollywood craftsmanship

The **Universal Studios Fabrication & Staff Shop** provides specialized services for clients in film, streaming, television and commercial productions along with related architectural and building industries.

Shop services include:

Custom Fabrication

Vacuum Form

Mold Making

Flex Molding

Casting

Fiberglass

Plastering

Concrete

Sculpture

And more...

The Shop delivers quality products on deadline from a wide-ranging catalogue collection or by custom fabrication from a client's own design.

Whether you are creating a blockbuster film, new streaming series, hit television show, building something new or restoring a historic building, Universal Studios Fabrication & Staff Shop will handle the project with personal care and skill.

- **Hours 6am to 2:30pm, Monday-Friday.**  
Hours adjusted to production schedules.
- **Accept Visa, MasterCard, Discover and American Express**
- **POs accepted with credit-approved customers**
- **U.S. and international shipping services available.**

# Fabrication & Staff Shop Collection

## Table of Contents

<b>Skins</b>	<b>3</b>
<b>Cast Hardware</b>	<b>25</b>
<b>Rosettes &amp; Staff Moulding</b>	<b>37</b>
<b>Medallions &amp; Friezes</b>	<b>49</b>
<b>Brackets &amp; Corbels</b>	<b>53</b>
<b>Cast Rivets &amp; Bolts</b>	<b>63</b>
<b>Specialty &amp; Custom</b>	<b>67</b>
<b>Capitals &amp; Columns</b>	<b>71</b>

# UNIVERSAL STUDIOS

## Art Departments

100 Universal City Plaza Bldg. 8166-1 Universal City, CA 91608

**universalstudioslot.com**

### Fabrication & Staff Shop

Telephone: 818.777.2337 / Fax: 818.866.5810

Mobile: 818.427.1596

Email: [staff.shop@nbcuni.com](mailto:staff.shop@nbcuni.com)

Custom Fabrication, Vacuum Form, Mould Making, Flex Moulding, Casting, Fiberglass, Plastering,  
Concrete and Sculpture

### Property Department

Telephone: 818.777.2784 / Fax: 818.866.1543

Email: [universal.property@nbcuni.com](mailto:universal.property@nbcuni.com)

Furniture, Hand Props, Carpets, Upholstery and Manufacturing

### Drapery Department

Telephone: 818.777.2761 / Fax: 818.866.1543

Email: [universal.property@nbcuni.com](mailto:universal.property@nbcuni.com)

Manufacturing and Installation

### Graphic Design & Sign Shop

Telephone: 818.777.2350 / Fax: 818.866.0209

Email: [universal.signshop@nbcuni.com](mailto:universal.signshop@nbcuni.com)

Full service Sign Shop including Large Format Printing, Vinyl Graphics, Hand Lettering, Floor  
Graphics, Custom Wallpaper, Vehicle Graphics, Prop Package and Specialty Printing

## Additional Studio Services

Stages & Backlot	818.777.3000	<a href="mailto:universal.locations@nbcuni.com">universal.locations@nbcuni.com</a>
Costume	818.777.2722	<a href="mailto:universal.costume@nbcuni.com">universal.costume@nbcuni.com</a>
Grip	818.777.2291	<a href="mailto:universal.grip@nbcuni.com">universal.grip@nbcuni.com</a>
Set Lighting	818.777.2291	<a href="mailto:universal.setlighting@nbcuni.com">universal.setlighting@nbcuni.com</a>
Production Office Services	818.777.7774	<a href="mailto:universal.officeservices@nbcuni.com">universal.officeservices@nbcuni.com</a>
Transportation	818.777.2966	<a href="mailto:universal.transpo@nbcuni.com">universal.transpo@nbcuni.com</a>
Cineo Lighting	818.777.1513	<a href="mailto:info@cineolighting.com">info@cineolighting.com</a>

**U.S. and international shipping services available.  
Please contact us for details.**

# SKINS

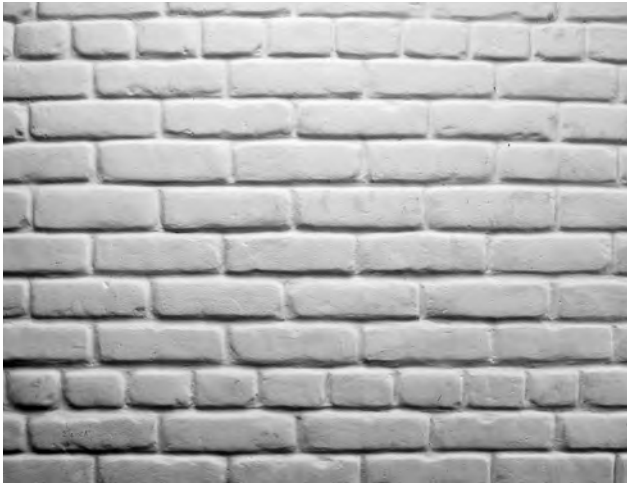
# Skins



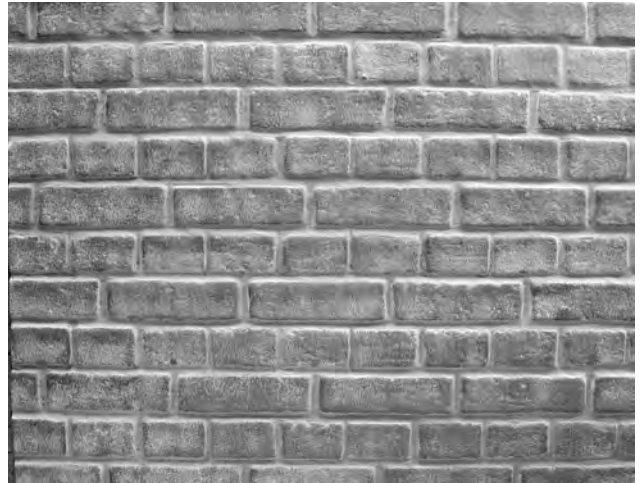
**440** ADOBE 91½" x 43½"



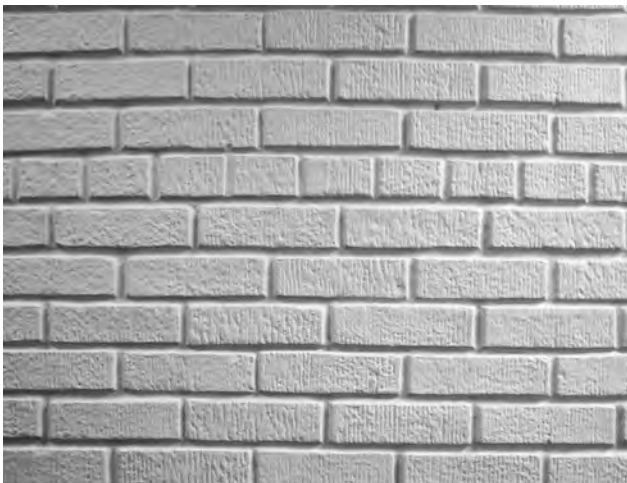
**441** BROKEN BRICK 85" x 38"



**442** COMMON BRICK 87" x 42"



**443** ENGLISH BOND 84" x 34"



**444** WESTSIDE BRICK 87" x 41"



**445** LEWIS BRICK 87" x 44"



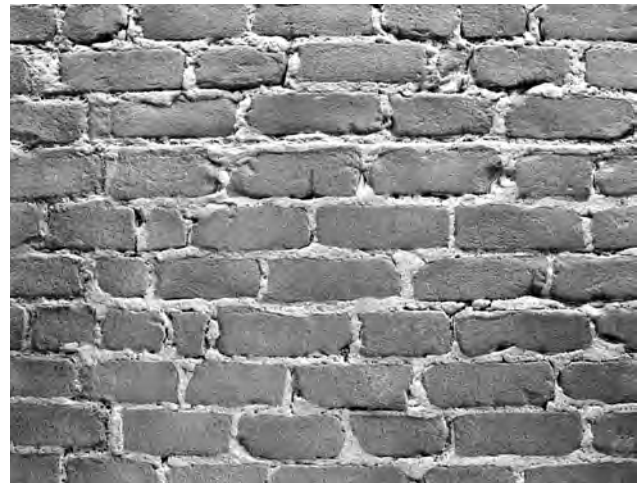
**446** FIRE BRICK 87" x 44"



**447** TAPESTRY BRICK 77" x 41"



**448** ROMAN BRICK 91" x 43"



**449** MURDER BRICK #1 83" x 40½"



**450** McKEAGAN BRICK 79" x 44"



**451** SQUEEZED BRICK 89" x 32"

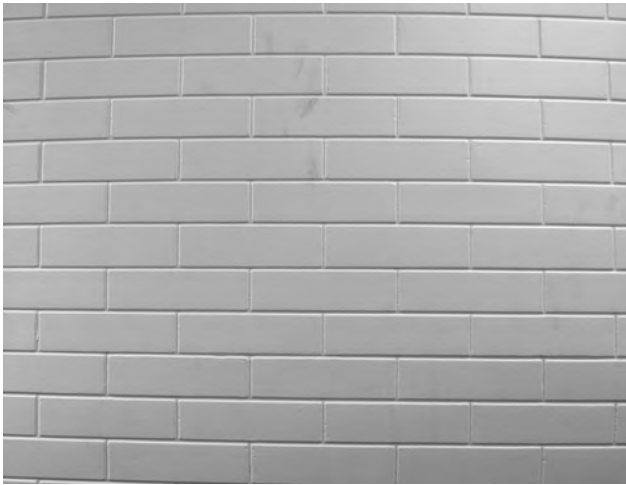
## Skins



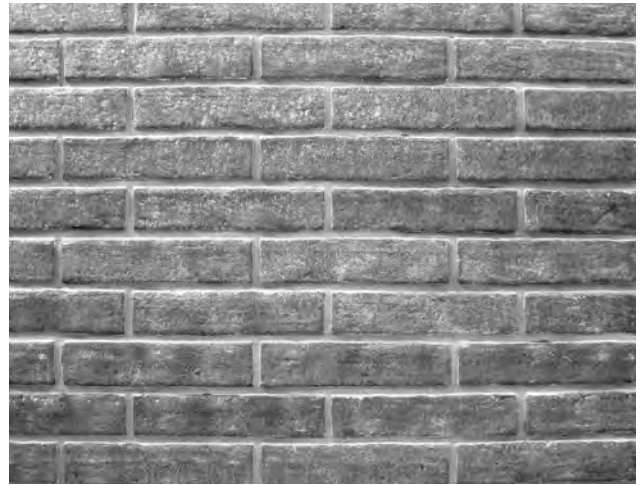
**452** 1/2 SCALE BRICK 85" x 42"



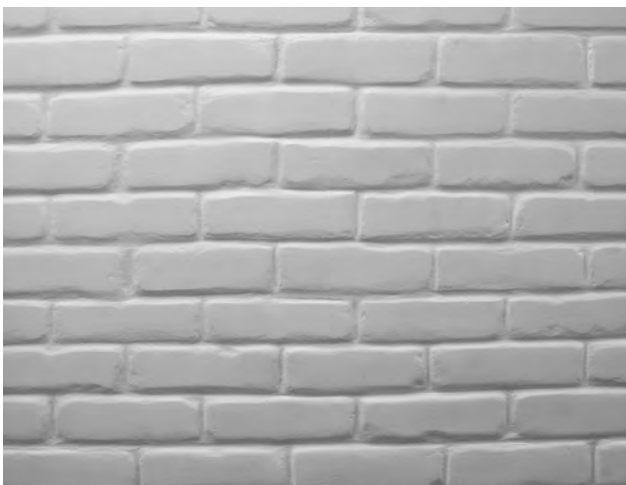
**453** ROMAN BRICK 82" x 32"



**454** TILE BRICK 82" x 41"



**455** TAPESTRY BRICK 11" 79" x 44"



**456** COMMON BRICK 79" x 42"



**457** 3/4 SCALE BRICK 82" x 42"





**458** ROMAN CORNER  
11" x 11" x 83"



**459** FIRE BRICK SILL 4½" x 9" x 88"



**460** TAPESTRY SILL 4" x 8" x 86½"



**461** COMMON BRICK SILL 4" x 8" x 86½"



**462** McKEAGAN SILL 4" x 8" x 86½"



**463** WESTSIDE SILL 4" x 8" x 86½"

## Skins



**464** FLEMISH BOND BRICK 79" x 41"



**465** CULTURED STONE 92" x 44"



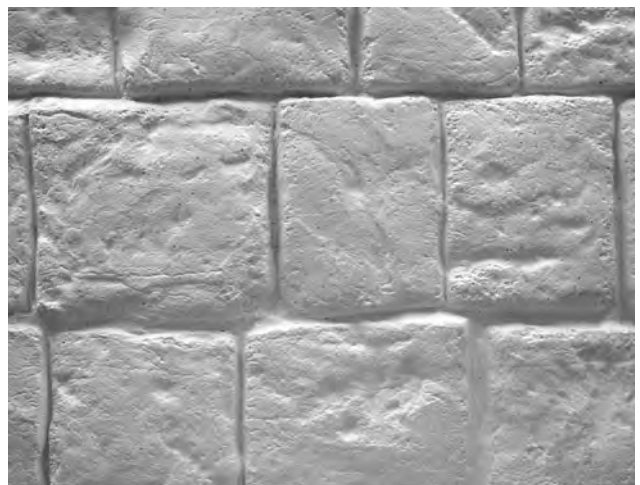
**466** RUBBLE ROCK 87" x 40"



**467** CUT STONE 89" x 35"



**468** VIRGINIA STONE 38" x 87"



**469** RKO STONE 84" x 42"



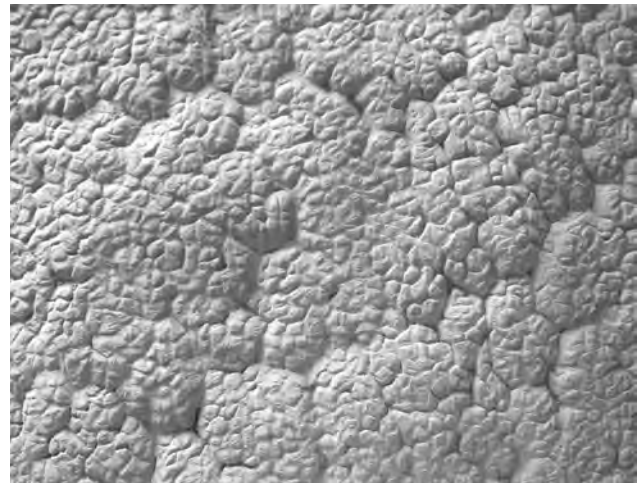
**470** LAVA STONE 43" x 90"



**471** NEW BROWNSTONE 82" x 41"



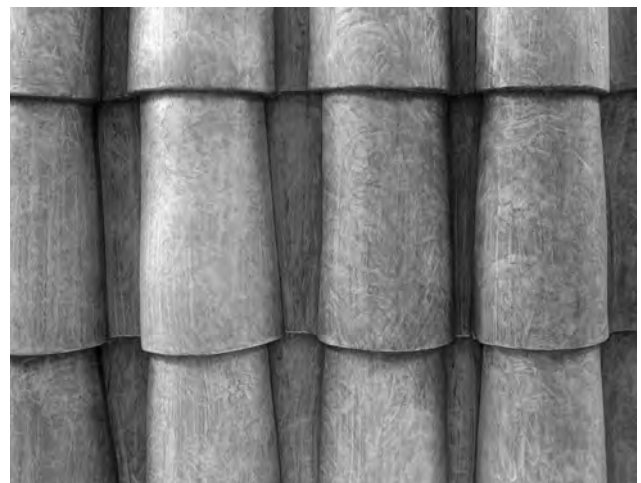
**472** STRATA ROCK 43" x 91"



**473** TEXTURED SKIN 43" x 90"



**474** PINE TREE BARK 39" x 90"



**476** SPANISH TILE 42" x 90"

## Skins



**477** MEXICAN TILE 43" x 91"



**478** WOOD SHINGLES 44" x 90"



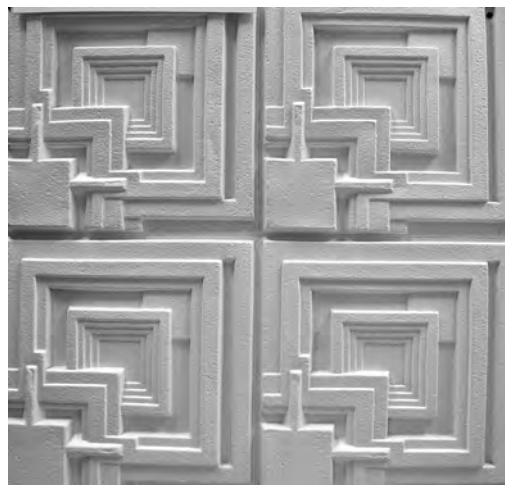
**479** HEAVY SHAKE 40" x 90"



**480** SLATE ROOF 44" x 84½"



**481** CORRUGATED TIN 27" x 89"



**483** FRANK LLOYD WRIGHT 32" x 80"



**484** GOLDEN PANEL left & right 14" each  
30½" x 74" sheet size



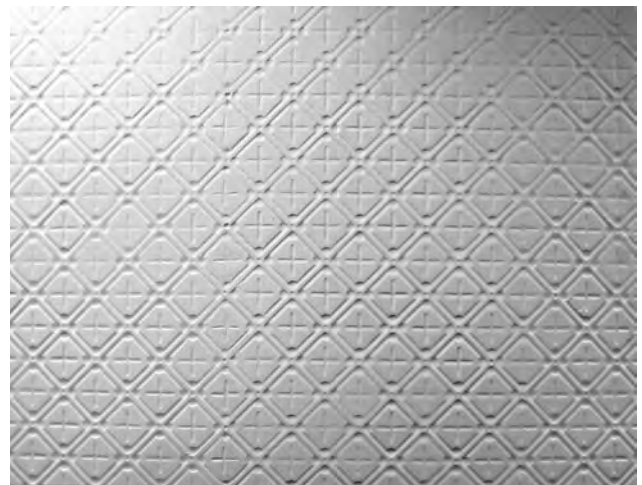
**485** LINEN FOLD PANEL 89" x 28"



**486** ROUGH OAK PANEL 35" x 73"

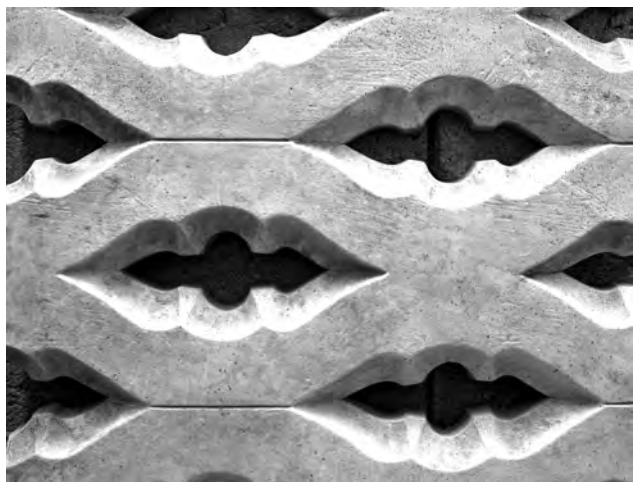


**487** LINCRESTA FRIEZE 44" x 71½" sheet size  
3 rows 14¼" each



**488** LINCRESTA 40" x 87"

# Skins



**489** STONE GRILL 83" x 42"



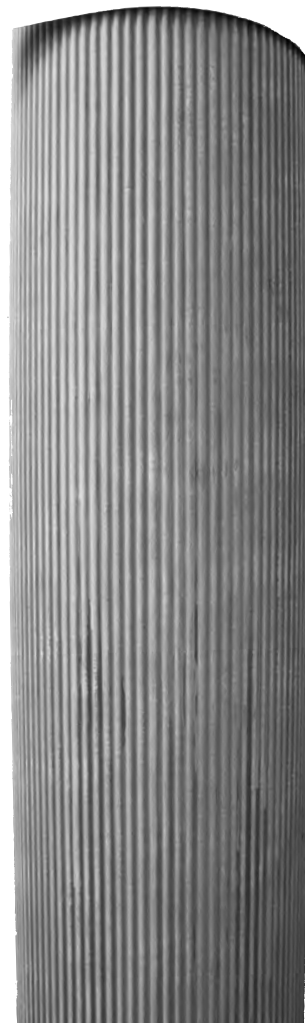
**493** BEADED SIDING 39" x 92½"



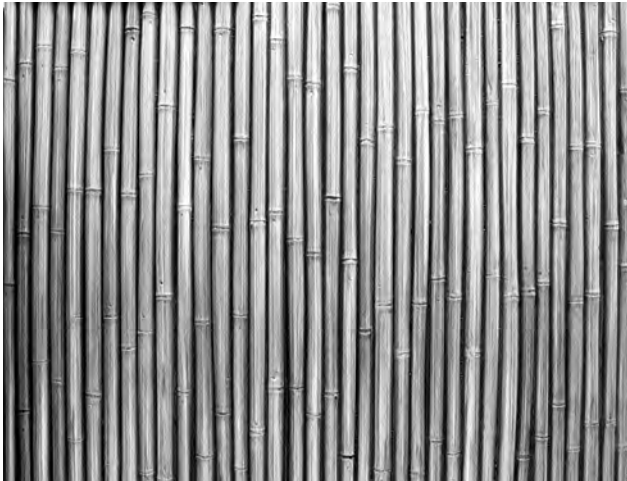
**490** 1½" FLUTES  
40" x 89"  
for fluted column



**491** 1" FLUTES  
42½" x 90"  
for fluted column



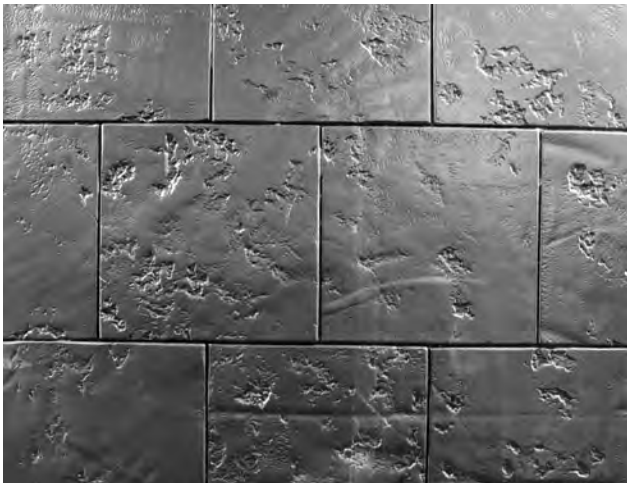
**492** ¼" FLUTES  
91" x 32½"  
for fluted column



**494** BAMBOO 41" x 92"



**495** CULTURED STONE 36" x 72"



**496** CULTURED STONE 36" x 72"



**497** CULTURED STONE 36" x 84"



**498** CHURCH STONE 38" x 88"

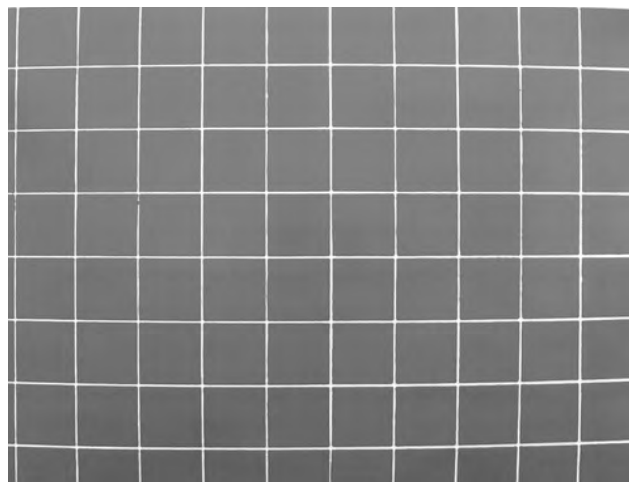


**499** CULTURED STONE 36" x 71"

# Skins



**500** SLATE 45" x 92"



**501** 4X4 CERAMIC TILE 40" x 88"



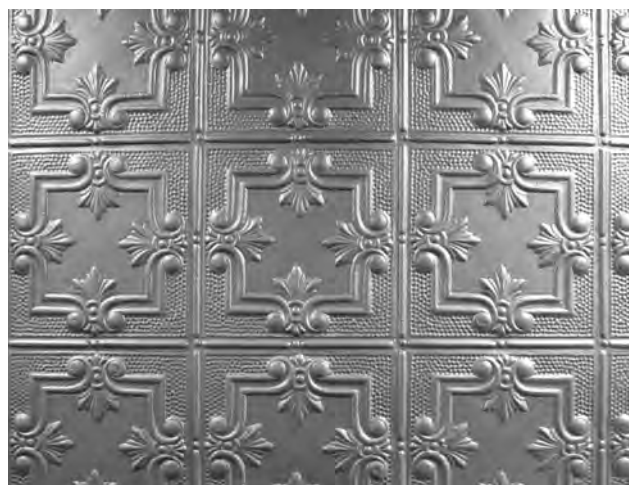
**502** RIVER ROCK 90" x 43"



**503** MAYAN PANEL 30" x 91"



**504** 3X5 CERAMIC TILE 89" x 44"



**505** LINCRESTA 37" x 86"





**510** LINCRESTA CORNICE  
8½" x 90" each row



**511** LINCRESTA CORNICE  
19" x 91" each row



**512** LINCRESTA CORNICE  
82" x 10"



**513** LINCRESTA CORNICE  
83½" x 10"

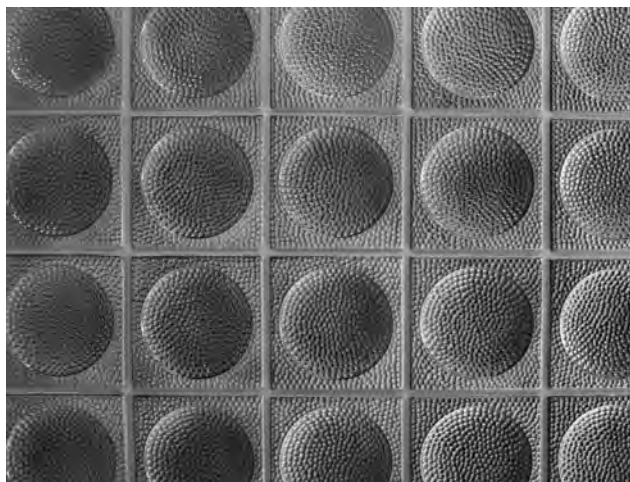


**514** LINCRESTA CORNICE  
89" x 14"

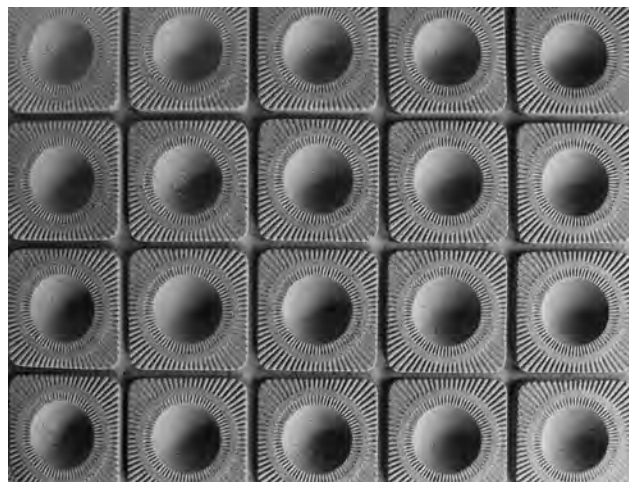


**515** LINCRESTA CORNICE  
89" x 11½"

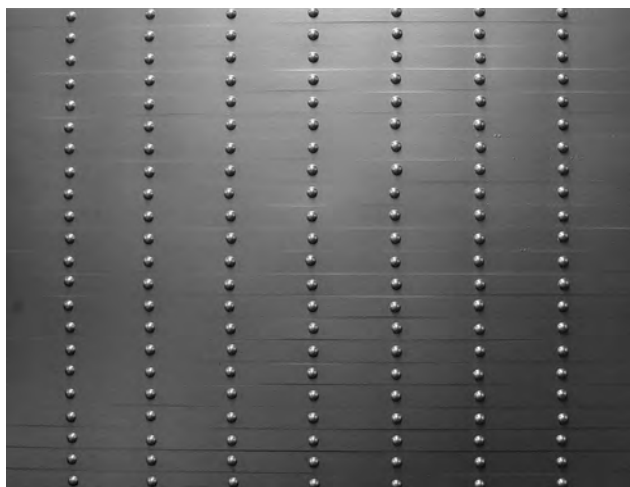
## Skins



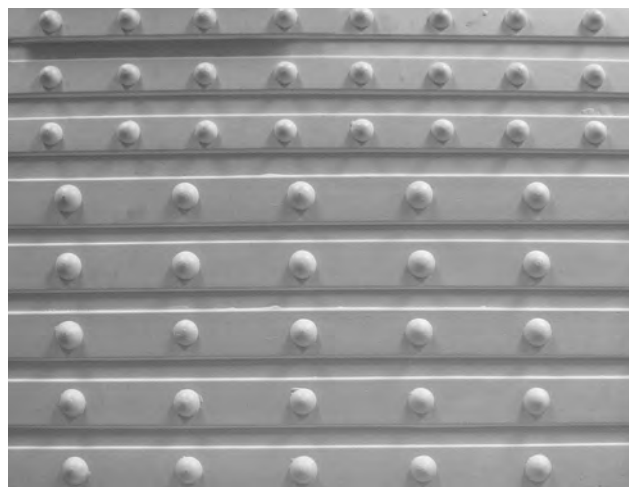
**516** GLASS BLOCK 45" x 89"



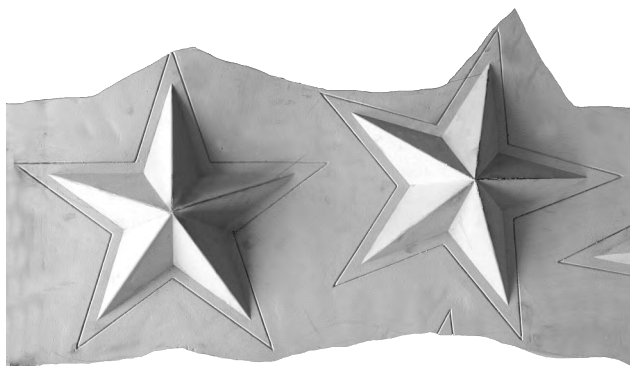
**517** PEBBLED BLOCK 45" x 80"



**518** 1/2" RIVETS 28" x 92"



**519** 1" & 1 1/2" RIVETS 39" x 89" sheet size



**521** STARS 42" x 68 1/2" sheet size



**522** INDIAN HEAD CORNICE 9 1/2" x 11"



530 MAYAN STELLA PANEL 29" x 88"



531 MAYAN PANEL 34" x 91"

## Skins



**550** FLAGSTONE 44½" x 93"



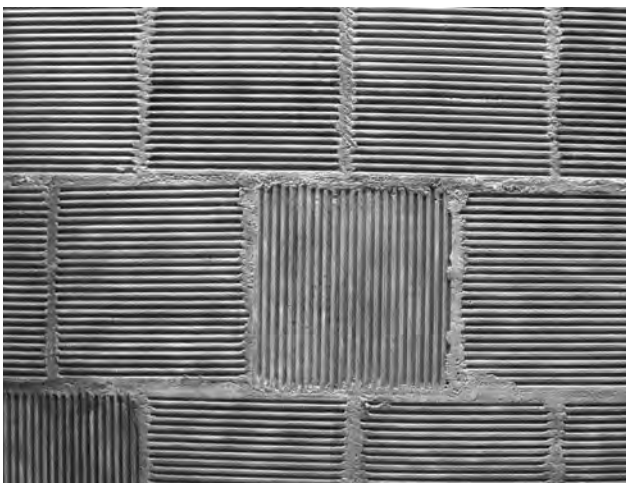
**551** COBBLE STONE 42" x 85"



**552** BEAVER STONE 43½" x 89"



**553** MAYAN 3' PANEL 36" x 24"  
4 panels to a sheet



**554** CHICAGO FIRE BRICK 84" x 36"



**555** ORNATE WINDOW 53<sup>3/8</sup>" x 18<sup>7/8</sup>"



**556** CANYON ROCK 77<sup>1/2</sup>" x 44<sup>1/2</sup>"



**557** METAL ROOF 43" x 92"



**558** CONCRETE BLOCK 40<sup>1/4</sup>" x 89"



**559** FLORAL ORNATE PANEL 16" x 78"  
2 to a sheet

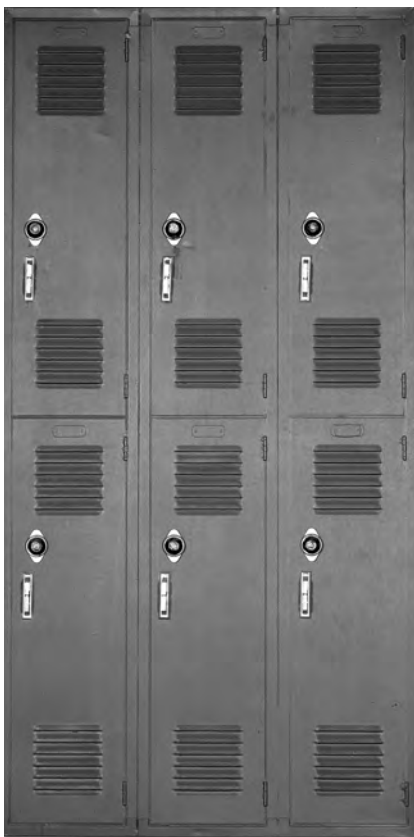
## Skins



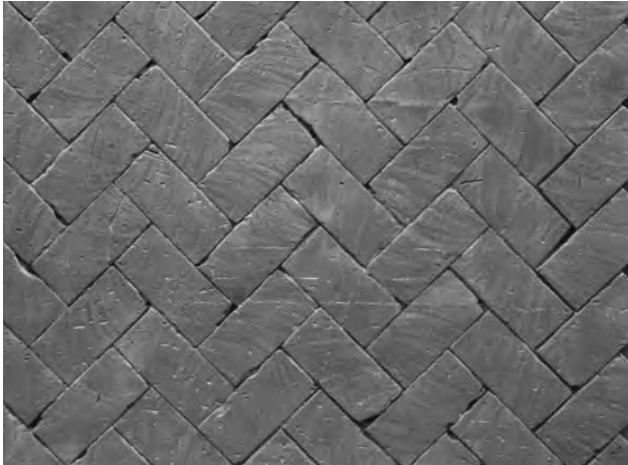
**560** LOGS 33" x 87"



**561** MAYAN COPAN PANEL 22" x 49"



**LOCKERS** 35" x 71½"  
HARDWARE EXTRA



**562** HERRINGBONE 60" x 45"  
FIBERGLASS ONLY



**563** BASKET WEAVE 50" x 103"  
FIBERGLASS ONLY



**564** 1920s CHICAGO ST. PAVERS 45" x 94"  
FIBERGLASS ONLY



**565** SLUMP STONE BLOCK 102 1/2" x 47"  
FIBERGLASS ONLY



**566** BOARD FORM CONCRETE  
5 1/2" - 5 3/4" JOINTS 51" x 113"  
FIBERGLASS ONLY

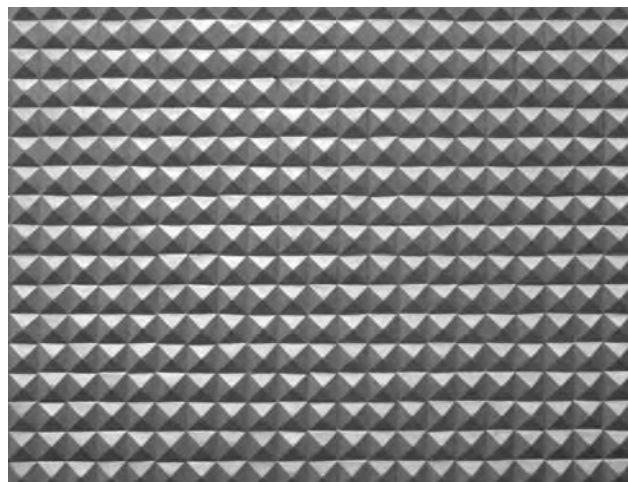


**567** TAPESTRY HEADER OR SILL 87" x 8 1/2"  
FIBERGLASS ONLY

## Skins



**568** SMALL RIVER ROCK  
STONE SIZE 3" TO 6" 32" x 48"  
FIBERGLASS ONLY



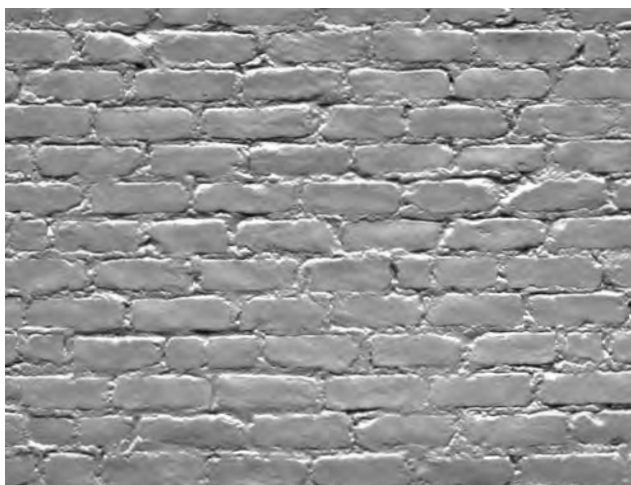
**569** DIAMOND DECO PANEL 92 $\frac{1}{4}$ " x 43"



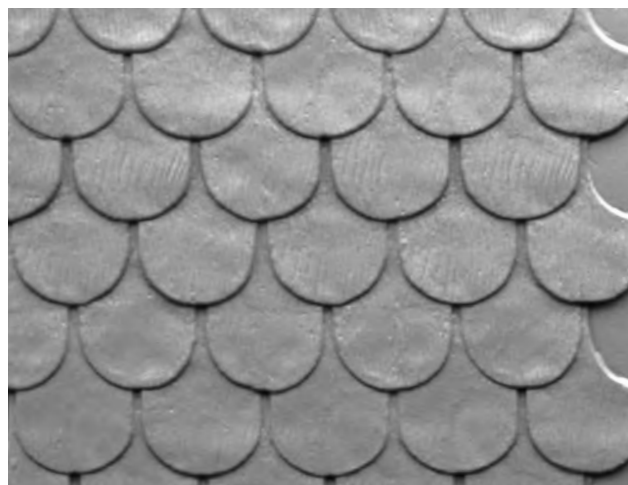
**570** DECORATIVE FIGURE 8 PANEL  
8 $\frac{1}{4}$ " x 80 $\frac{1}{4}$ " FIBERGLASS ONLY



**571** DRY LAKE BED 87" x 42"

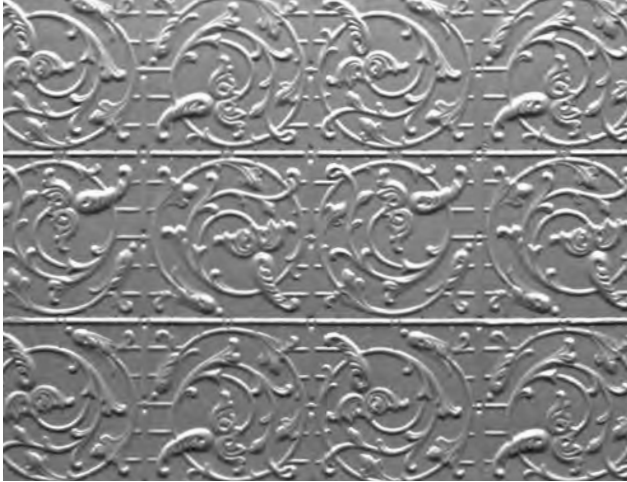


**572** MURDER BRICK #2 40" x 88"

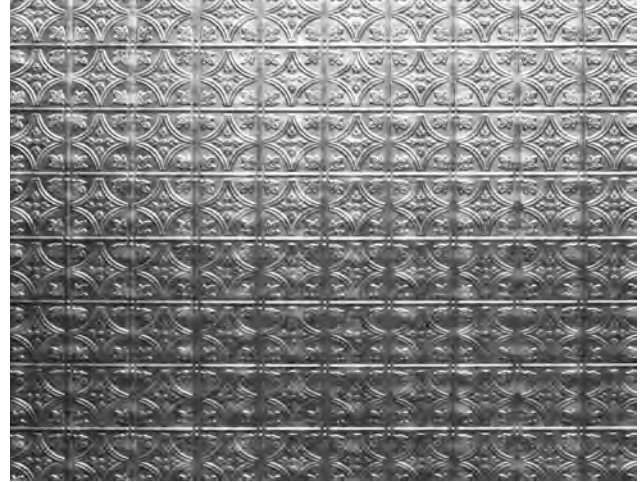


**573** GINGERBREAD SIDING 43" T x 44" W





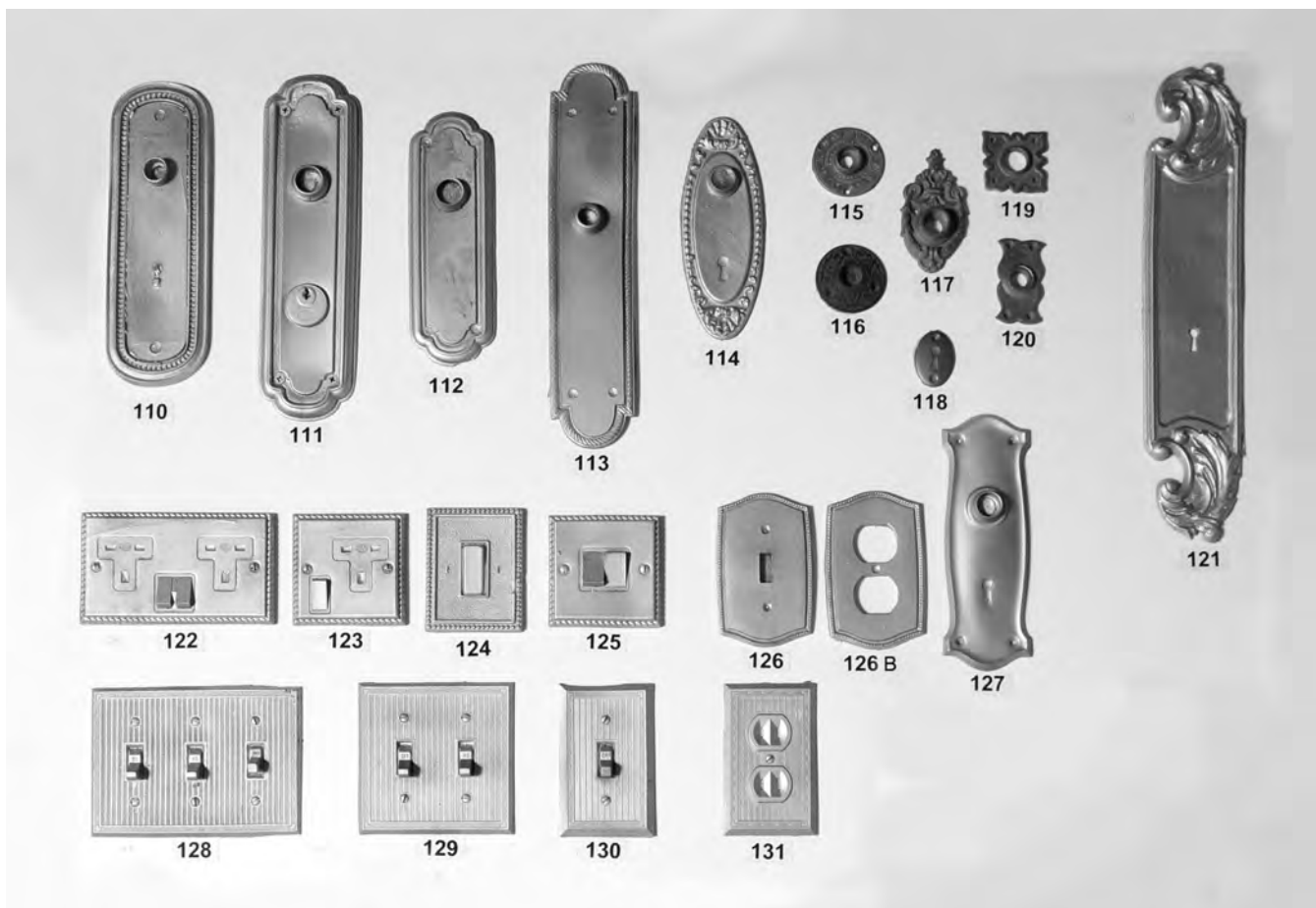
**574** NEW LINCRESTA 36" x 83"



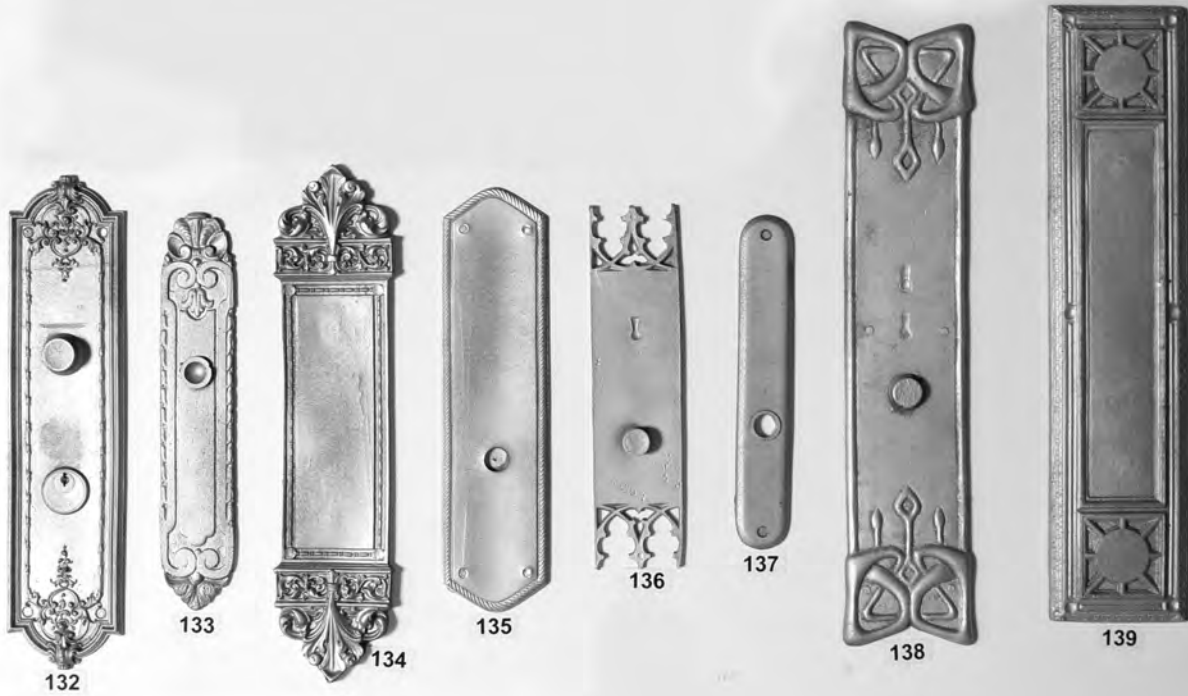
**575** SMALL LINCRESTA 36" x 84"

# CAST HARDWARE

## Cast Hardware

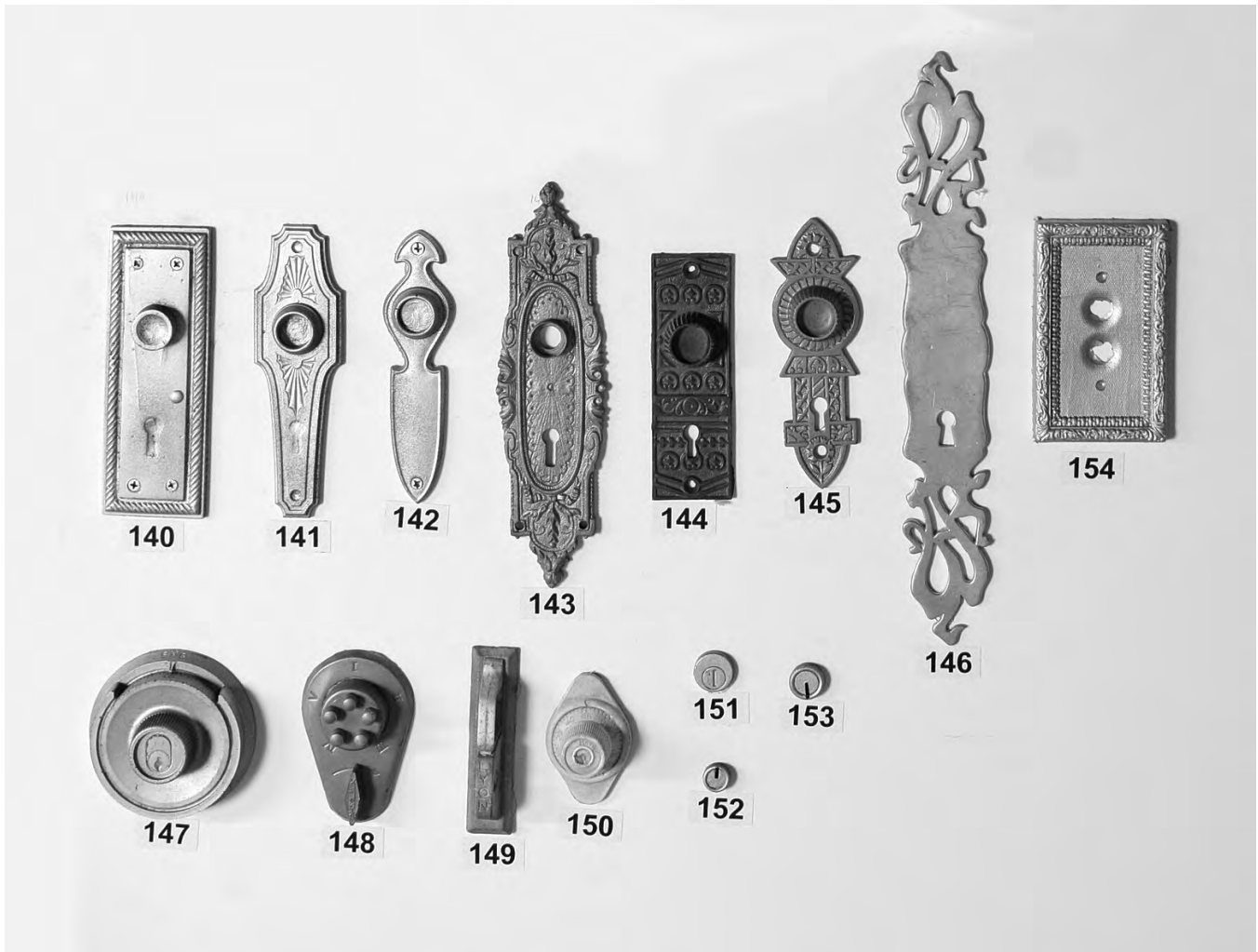


- 110. 9" x 3"
- 111. 10<sup>1</sup>/<sub>4</sub>" x 3"
- 112. 7<sup>1</sup>/<sub>2</sub>" x 2<sup>1</sup>/<sub>2</sub>"
- 113. 11<sup>1</sup>/<sub>2</sub>" x 2<sup>1</sup>/<sub>2</sub>"
- 114. 6<sup>1</sup>/<sub>2</sub>" x 2<sup>1</sup>/<sub>2</sub>"
- 115. 2"
- 116. 2"
- 117. 3<sup>1</sup>/<sub>2</sub>" x 2"
- 118. 1<sup>5</sup>/<sub>8</sub>" x 1<sup>1</sup>/<sub>8</sub>"
- 119. 1<sup>3</sup>/<sub>4</sub>"
- 120. 2<sup>1</sup>/<sub>2</sub>" x 1<sup>1</sup>/<sub>4</sub>"
- 121. 14<sup>1</sup>/<sub>4</sub>" x 3"
- 122. 3<sup>1</sup>/<sub>4</sub>" x 3"
- 123. 3<sup>1</sup>/<sub>4</sub>" x 5<sup>3</sup>/<sub>4</sub>"
- 124. 3<sup>5</sup>/<sub>8</sub>" x 2<sup>7</sup>/<sub>8</sub>"
- 125. 3<sup>1</sup>/<sub>4</sub>" x 3<sup>1</sup>/<sub>4</sub>"
- 126. 4<sup>1</sup>/<sub>2</sub>" x 2<sup>3</sup>/<sub>4</sub>"
- 126 B. 4<sup>1</sup>/<sub>2</sub>" x 2<sup>3</sup>/<sub>4</sub>"
- 127. 7<sup>1</sup>/<sub>2</sub>" x 2<sup>1</sup>/<sub>2</sub>"
- 128. 4<sup>1</sup>/<sub>2</sub>" x 6"
- 129. 4<sup>1</sup>/<sub>2</sub>" x 4<sup>1</sup>/<sub>2</sub>"
- 130. 4<sup>1</sup>/<sub>2</sub>" x 2<sup>3</sup>/<sub>4</sub>"
- 131. 4<sup>1</sup>/<sub>2</sub>" x 2<sup>3</sup>/<sub>4</sub>"

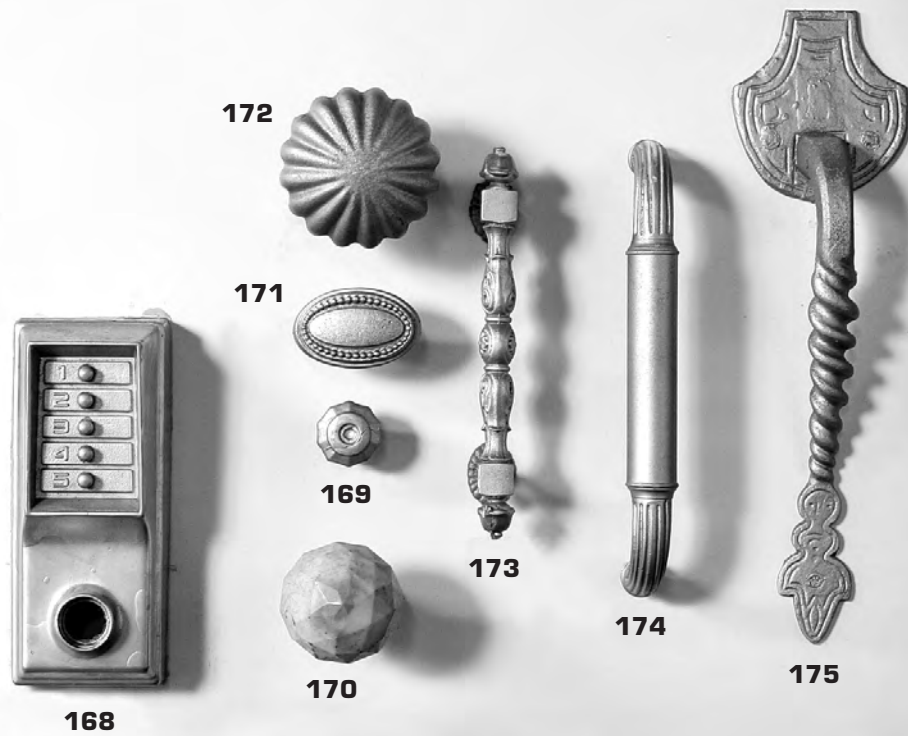


- 132. 14<sup>1</sup>/<sub>8</sub>" x 3<sup>3</sup>/<sub>8</sub>"
- 133. 11<sup>1</sup>/<sub>4</sub>" x 2<sup>1</sup>/<sub>8</sub>"
- 134. 14<sup>3</sup>/<sub>4</sub>" x 3<sup>3</sup>/<sub>8</sub>"
- 135. 12" x 3"
- 136. 10<sup>3</sup>/<sub>8</sub>" x 2<sup>1</sup>/<sub>2</sub>"
- 137. 9<sup>1</sup>/<sub>2</sub>" x 1<sup>1</sup>/<sub>2</sub>"
- 138. 17<sup>3</sup>/<sub>4</sub>" x 3<sup>1</sup>/<sub>2</sub>"
- 139. 9<sup>1</sup>/<sub>2</sub>" x 1<sup>1</sup>/<sub>2</sub>"

## Cast Hardware

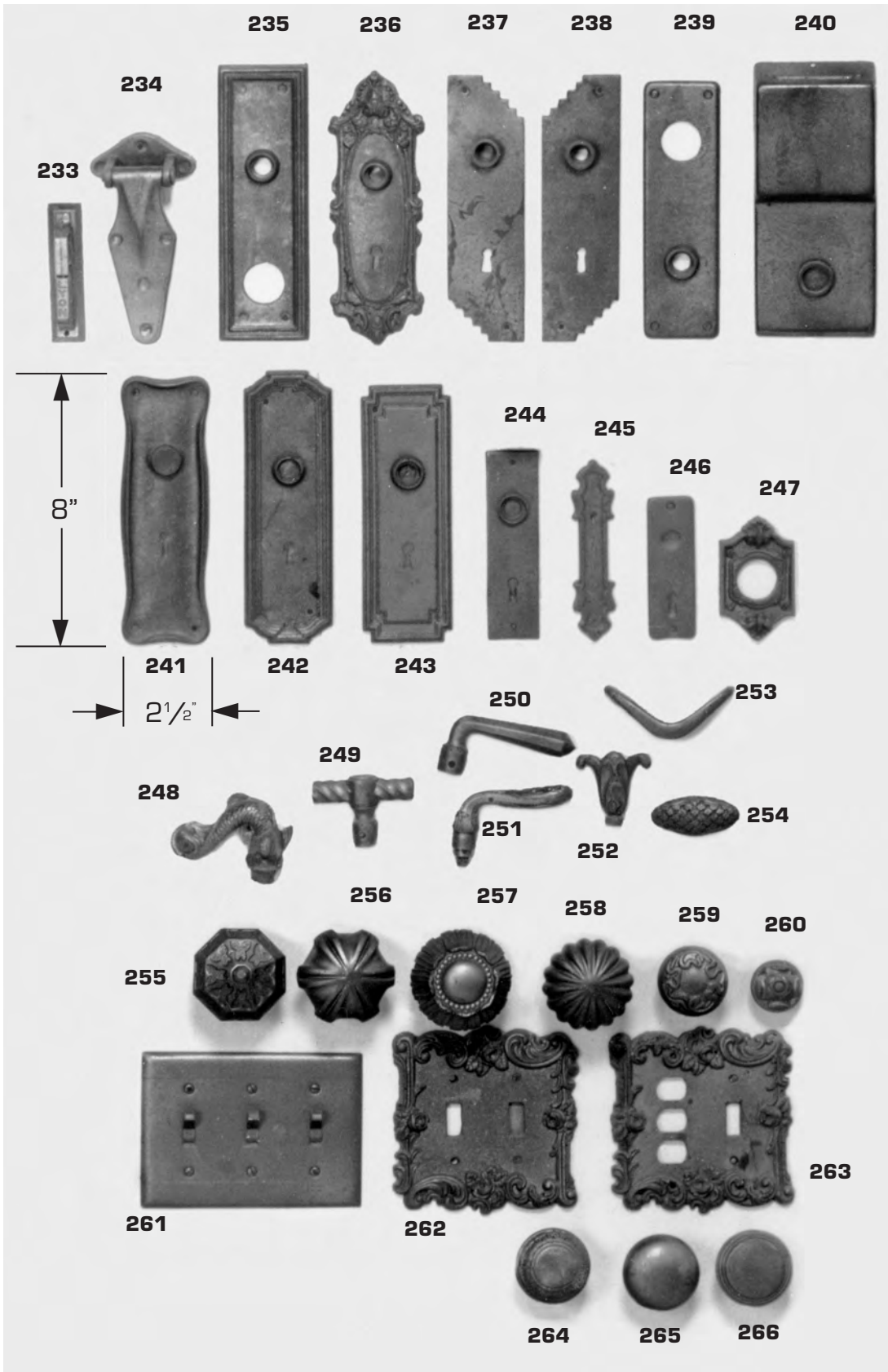


- 140.  $6\frac{1}{4}'' \times 2\frac{1}{4}''$
- 141.  $6\frac{3}{8}'' \times 2''$
- 142.  $6'' \times 1\frac{1}{2}''$
- 143.  $8\frac{3}{4}'' \times 2\frac{1}{4}''$
- 144.  $5\frac{1}{4}'' \times 1\frac{3}{4}''$
- 145.  $6'' \times 2''$
- 146.  $12\frac{3}{4}'' \times 2''$
- 147.  $3\frac{1}{2}''$
- 148.  $4'' \times 2\frac{1}{2}''$
- 149.  $4'' \times 1''$
- 150.  $3'' \times 1\frac{3}{4}''$
- 151.  $1\frac{7}{8}''$
- 152.  $\frac{1}{2}''$
- 153.  $\frac{3}{4}''$
- 154.  $4\frac{3}{4}'' \times 3''$

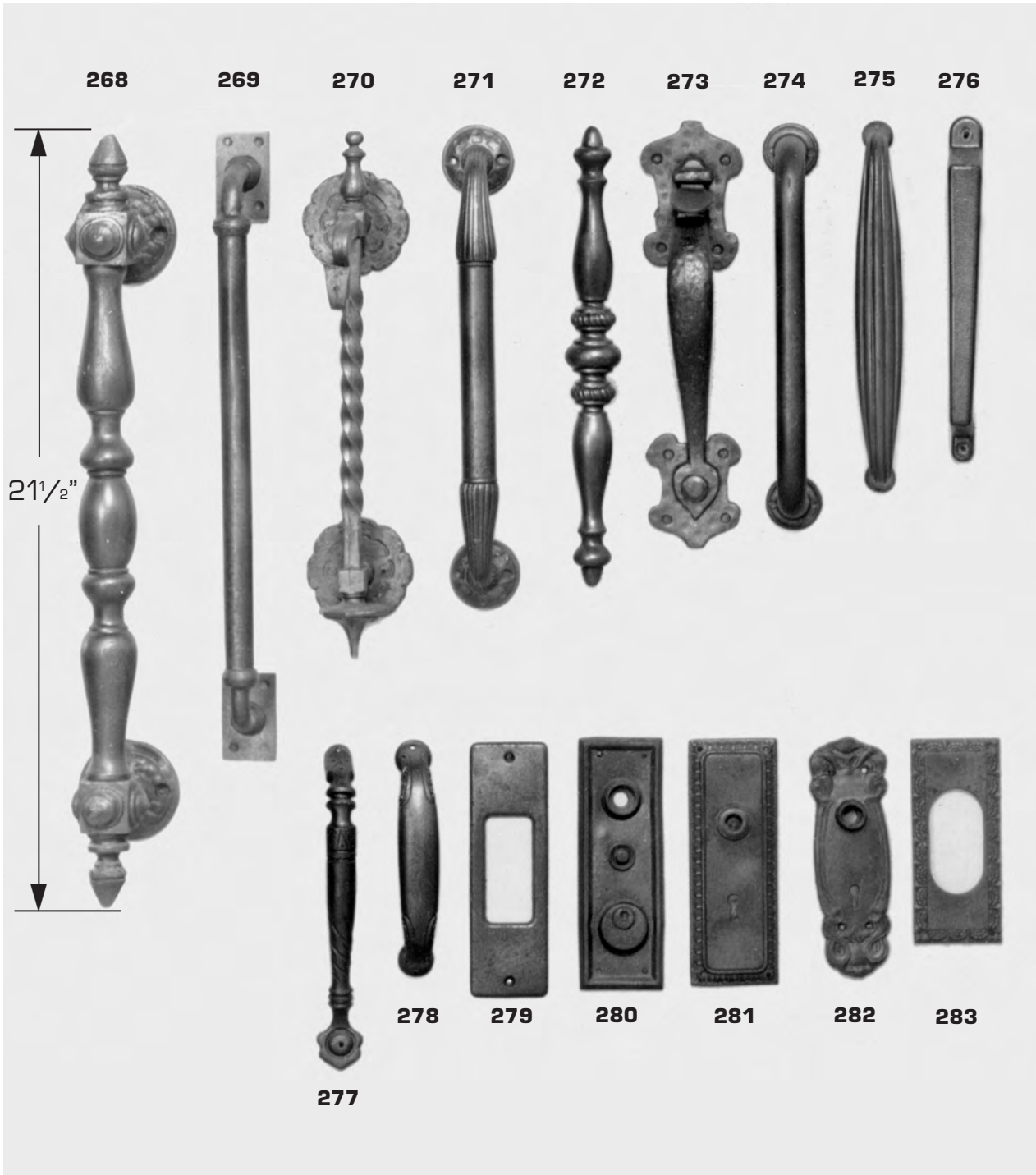


- 168.  $7\frac{1}{2}'' \times 3\frac{1}{8}''$
- 169.  $1\frac{1}{4}''$
- 170.  $2\frac{1}{2}''$
- 171.  $1\frac{1}{2}'' \times 2\frac{1}{2}''$
- 172.  $3\frac{1}{4}''$
- 173.  $7\frac{3}{4}'' \times 3\frac{3}{4}''$
- 174.  $9\frac{1}{4}'' \times 1''$
- 175.  $13'' \times 3\frac{1}{2}''$

# Cast Hardware



- 233. 4" x 1"
- 234. 6" x 3 - 1/4"P
- 235. 8" x 2 1/2"
- 236. 7 3/4" x 2 3/4"
- 237. 7 3/4" x 2 1/4"
- 238. 7 3/4" x 2 1/4"
- 239. 7 1/2" x 2 1/4"
- 240. 8" x 3 3/2"
- 241. 7 3/4" x 2 1/2"
- 242. 7 3/4" x 2 1/2"
- 243. 7 1/2" x 2 1/2"
- 244. 5 1/2" x 1 1/2"
- 245. 5 1/4" x 1 1/4"
- 246. 4" x 1 3/8"
- 247. 3 1/2" x 2 1/8"
- 248. 2 1/2" x 3 1/2"
- 249. 2" x 3"
- 250. 2" x 3 3/4"
- 251. 2 3/4" x 3 1/2"
- 252. 2 1/4" x 2 1/4"
- 253. 1 1/2" x 3 3/4"
- 254. 1" x 2 1/2"
- 255. 2 1/2" x 2 1/2"
- 256. 2 1/2" - 2 1/2"P
- 257. 3" - 2 3/4"P
- 258. 2 1/2" - 2 1/2"P
- 259. 2" - 2"P
- 260. 1 1/2" - 1 1/4"P
- 261. 6 1/4" x 4"
- 262. 5 1/2" x 5 1/2"
- 263. 5 1/2" x 5 1/2"
- 264. 2 1/4" - 2"P
- 265. 2 1/4" - 2"P
- 266. 2 1/8" - 1 1/8"P

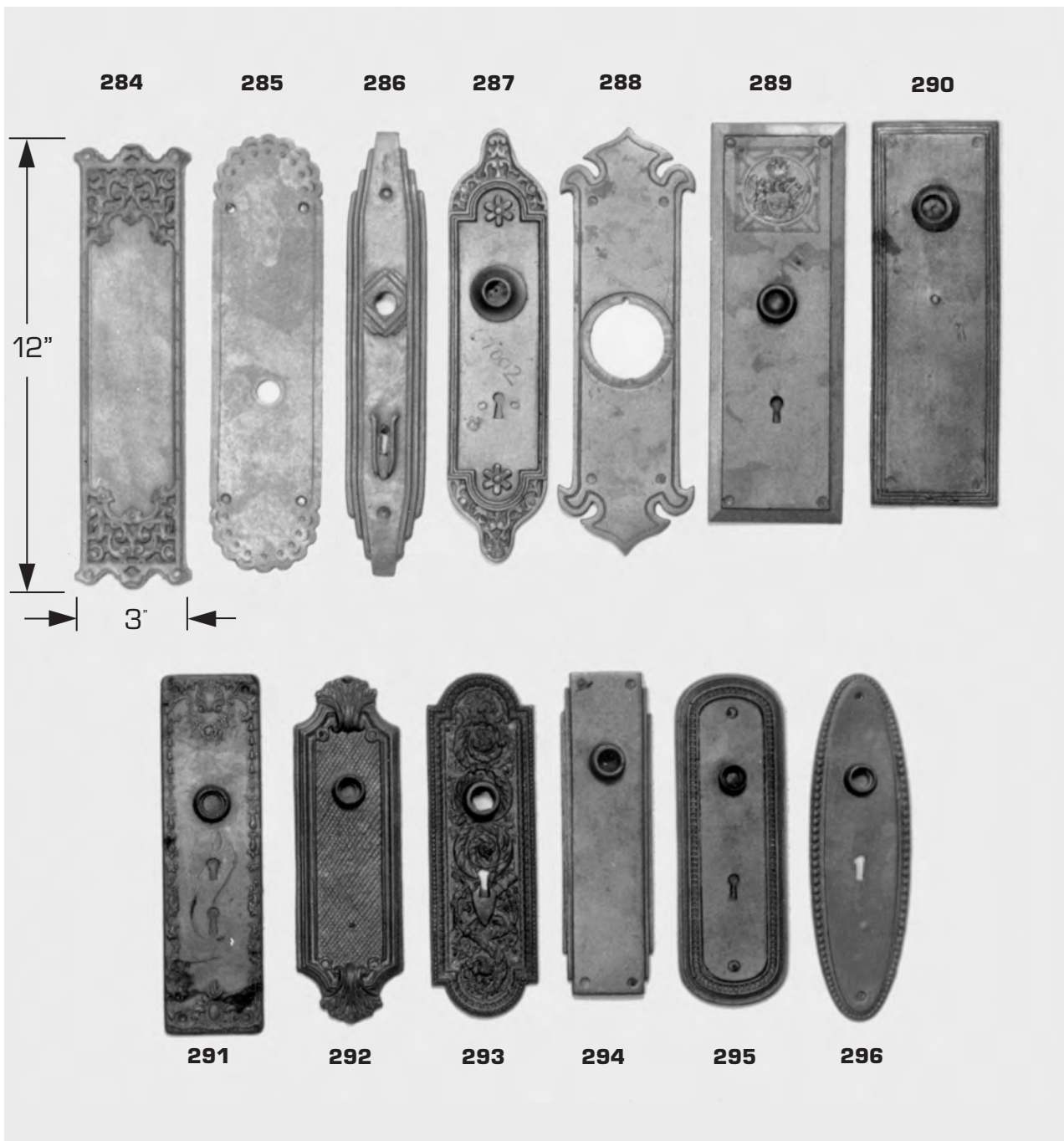


268. 21" x 3 - 4<sup>1</sup>/<sub>2</sub>"P  
 269. 17<sup>1</sup>/<sub>2</sub>" x 1<sup>1</sup>/<sub>2</sub>" - 2<sup>3</sup>/<sub>4</sub>"P  
 270. 14<sup>1</sup>/<sub>2</sub>" x 3" - 2"P  
 271. 13<sup>1</sup>/<sub>2</sub>" x 2" - 2<sup>3</sup>/<sub>4</sub>"P  
 272. 12<sup>3</sup>/<sub>4</sub>" x 1<sup>3</sup>/<sub>4</sub>" - 2<sup>1</sup>/<sub>4</sub>"P  
 273. 12" x 3" - 2<sup>1</sup>/<sub>4</sub>"P  
 274. 11<sup>1</sup>/<sub>4</sub>" x 1<sup>1</sup>/<sub>2</sub>" - 2<sup>1</sup>/<sub>2</sub>"P  
 275. 10<sup>1</sup>/<sub>4</sub>" x 1<sup>1</sup>/<sub>2</sub>" - 2"P

276. 9<sup>3</sup>/<sub>4</sub>" x 1" - 2"P  
 277. 9" x 1<sup>1</sup>/<sub>4</sub>" - 2<sup>1</sup>/<sub>4</sub>"P  
 278. 6<sup>1</sup>/<sub>2</sub>" x 1<sup>1</sup>/<sub>4</sub>" - 2"P  
 279. 7<sup>1</sup>/<sub>4</sub>" x 2<sup>1</sup>/<sub>2</sub>"  
 280. 7" x 2<sup>1</sup>/<sub>2</sub>"  
 281. 7" x 2<sup>1</sup>/<sub>2</sub>"  
 282. 6<sup>3</sup>/<sub>4</sub>" x 2<sup>1</sup>/<sub>4</sub>"  
 283. 5<sup>3</sup>/<sub>4</sub>" x 2<sup>1</sup>/<sub>2</sub>"



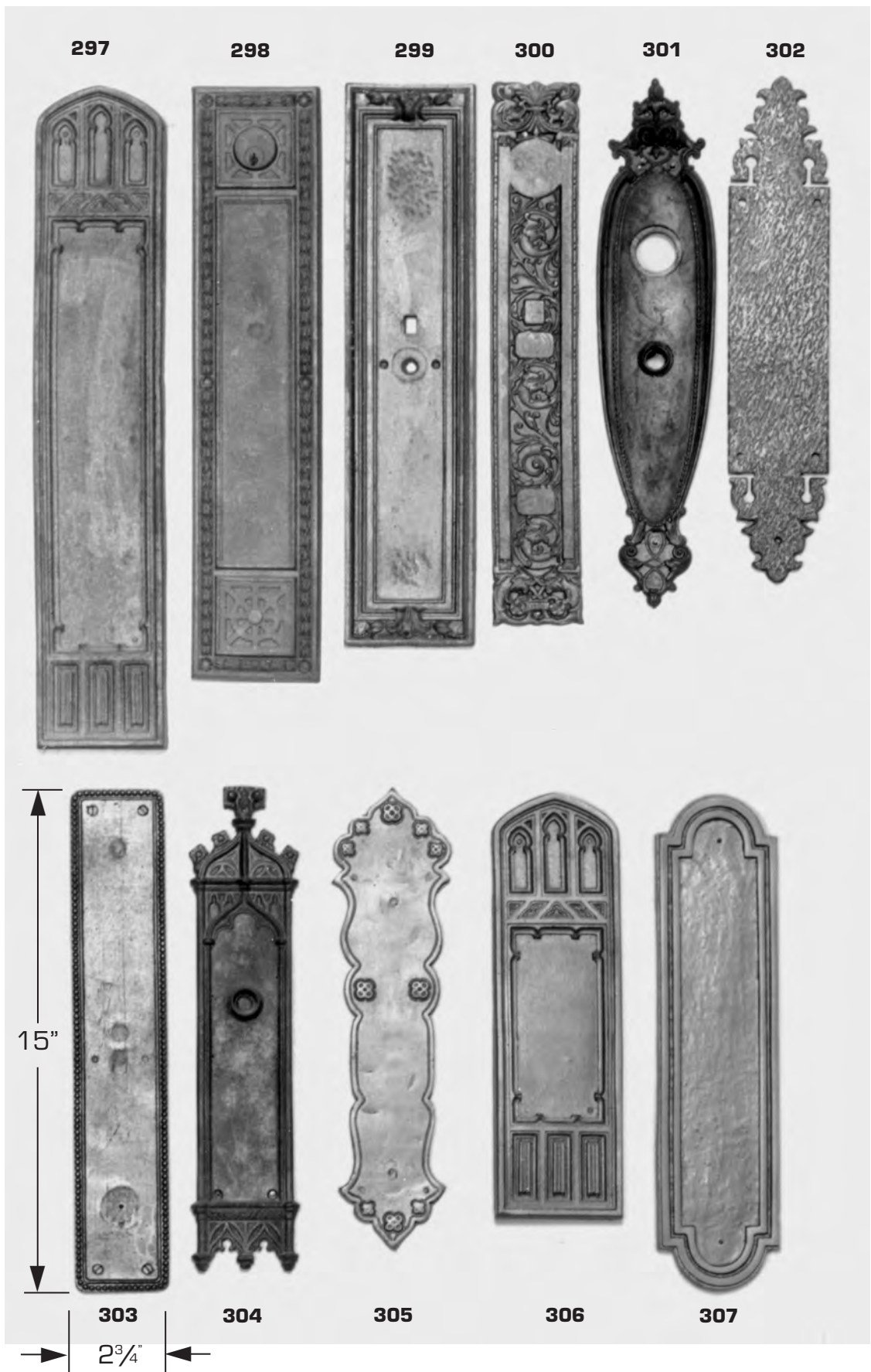
# Cast Hardware



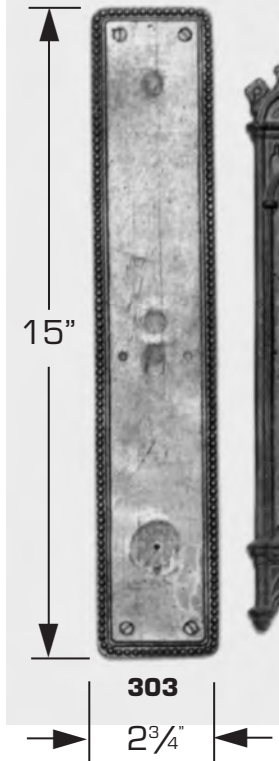
- 284. 12" x 3"
- 285. 12" x 3"
- 286. 12" x 2<sup>1</sup>/<sub>4</sub>"
- 287. 12" x 2<sup>3</sup>/<sub>4</sub>"
- 288. 11<sup>1</sup>/<sub>4</sub>" x 3<sup>3</sup>/<sub>4</sub>"
- 289. 10<sup>3</sup>/<sub>4</sub>" x 3<sup>1</sup>/<sub>4</sub>"
- 290. 10<sup>1</sup>/<sub>2</sub>" x 3<sup>1</sup>/<sub>2</sub>"

- 291. 9<sup>3</sup>/<sub>4</sub>" x 2<sup>3</sup>/<sub>4</sub>"
- 292. 9<sup>1</sup>/<sub>4</sub>" x 2<sup>7</sup>/<sub>8</sub>"
- 293. 9<sup>1</sup>/<sub>2</sub>" x 3"
- 294. 8<sup>3</sup>/<sub>4</sub>" x 2<sup>1</sup>/<sub>2</sub>"
- 295. 9" x 3"
- 296. 9<sup>1</sup>/<sub>2</sub>" x 2<sup>3</sup>/<sub>4</sub>"

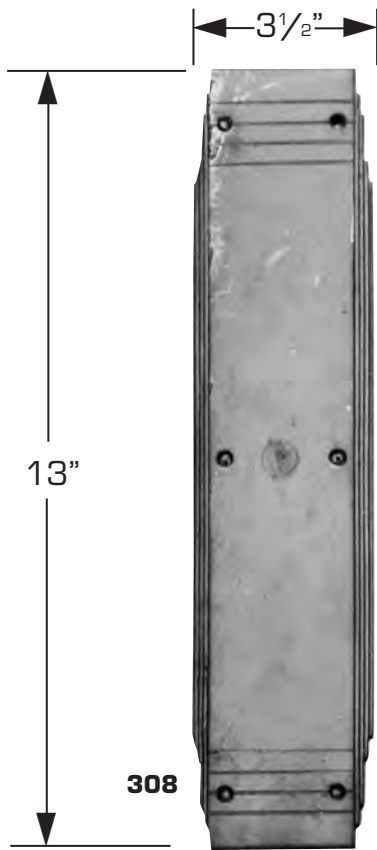
# Cast Hardware



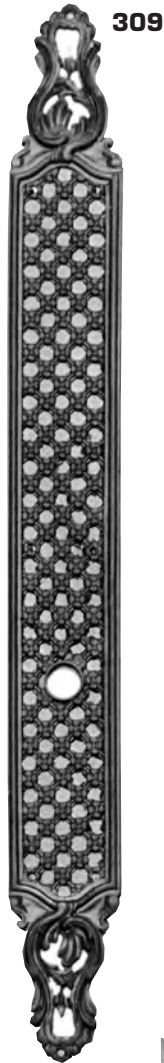
- 297. 19<sup>1</sup>/<sub>2</sub>" x 3<sup>3</sup>/<sub>8</sub>"
- 298. 17<sup>1</sup>/<sub>2</sub>" x 3<sup>3</sup>/<sub>4</sub>"
- 299. 16<sup>1</sup>/<sub>2</sub>" x 3<sup>3</sup>/<sub>4</sub>"
- 300. 16" x 2<sup>1</sup>/<sub>2</sub>"
- 301. 15<sup>1</sup>/<sub>2</sub>" x 3<sup>1</sup>/<sub>2</sub>"
- 302. 15" x 3"
- 303. 15" x 2<sup>3</sup>/<sub>4</sub>"
- 304. 14<sup>1</sup>/<sub>4</sub>" x 3"
- 305. 13<sup>3</sup>/<sub>4</sub>" x 3<sup>1</sup>/<sub>2</sub>"
- 306. 12<sup>1</sup>/<sub>2</sub>" x 3<sup>3</sup>/<sub>4</sub>"
- 307. 14<sup>3</sup>/<sub>4</sub>" x 3<sup>3</sup>/<sub>4</sub>"



# Cast Hardware



308



309



310



311



312



313



314

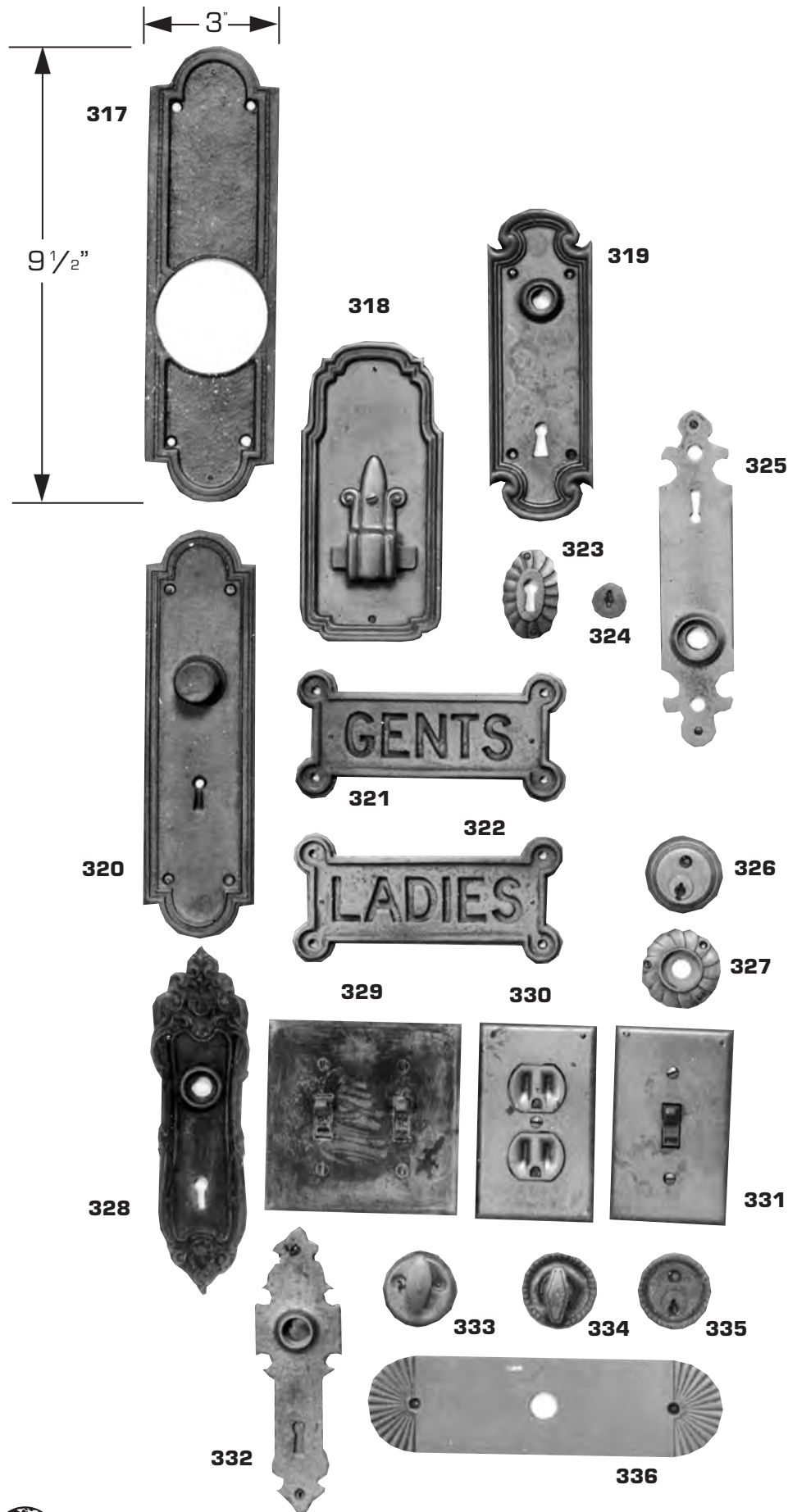


315



316

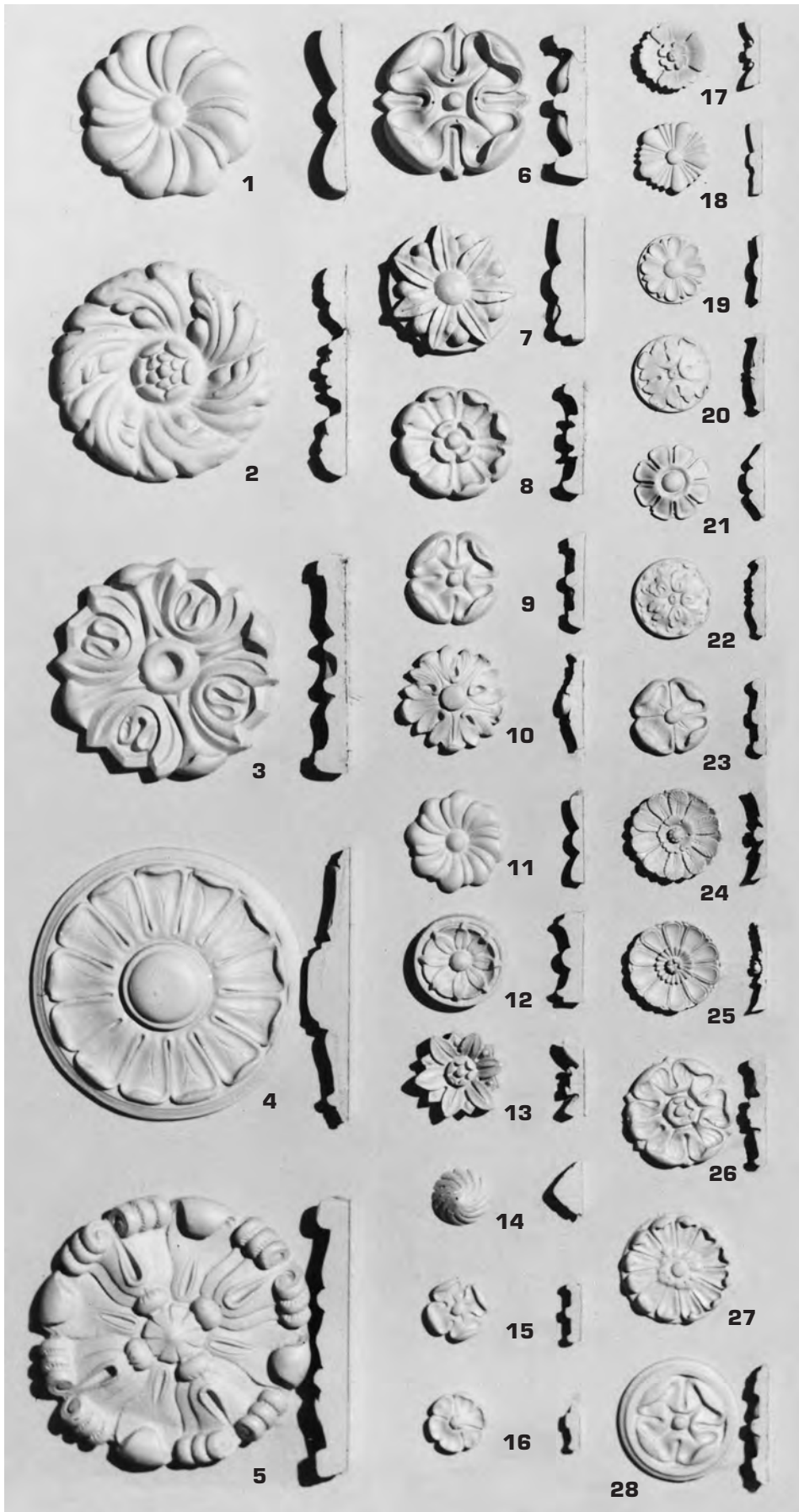
- 308. 14<sup>1</sup>/<sub>4</sub>" x 3<sup>3</sup>/<sub>8</sub>"
- 309. 19<sup>3</sup>/<sub>4</sub>" x 2<sup>1</sup>/<sub>2</sub>"
- 310. 14<sup>1</sup>/<sub>2</sub>" x 2"
- 311. 12<sup>1</sup>/<sub>4</sub>" x 3<sup>1</sup>/<sub>4</sub>"
- 312. 10<sup>1</sup>/<sub>2</sub>" x 3"
- 313. 11<sup>1</sup>/<sub>2</sub>" x 2<sup>1</sup>/<sub>2</sub>"
- 314. 12<sup>3</sup>/<sub>4</sub>" x 2<sup>1</sup>/<sub>4</sub>"
- 315. 7<sup>3</sup>/<sub>4</sub>" x 3<sup>1</sup>/<sub>4</sub>"
- 316. 10" x 2"



- 317. 9 1/2" x 3"
- 318. 6 3/4" x 3 1/4"
- 319. 7 1/4" x 2 1/2"
- 320. 9 1/4" x 2 1/2"
- 321. 3" x 6"
- 322. 3" x 6"
- 323. 2" x 1 1/4"
- 324. 3/4"
- 325. 7 1/2" x 1 3/4"
- 326. 1 3/4"
- 327. 1 3/4"
- 328. 7 3/4" x 2 1/4"
- 329. 4 1/2" x 4 1/2"
- 330. 4" x 2 3/4"
- 331. 4" x 2 3/4"
- 332. 6 1/2" x 2"
- 333. 1 1/2"
- 334. 1 1/2"
- 335. 1 1/2"
- 336. 8" x 2 1/4"

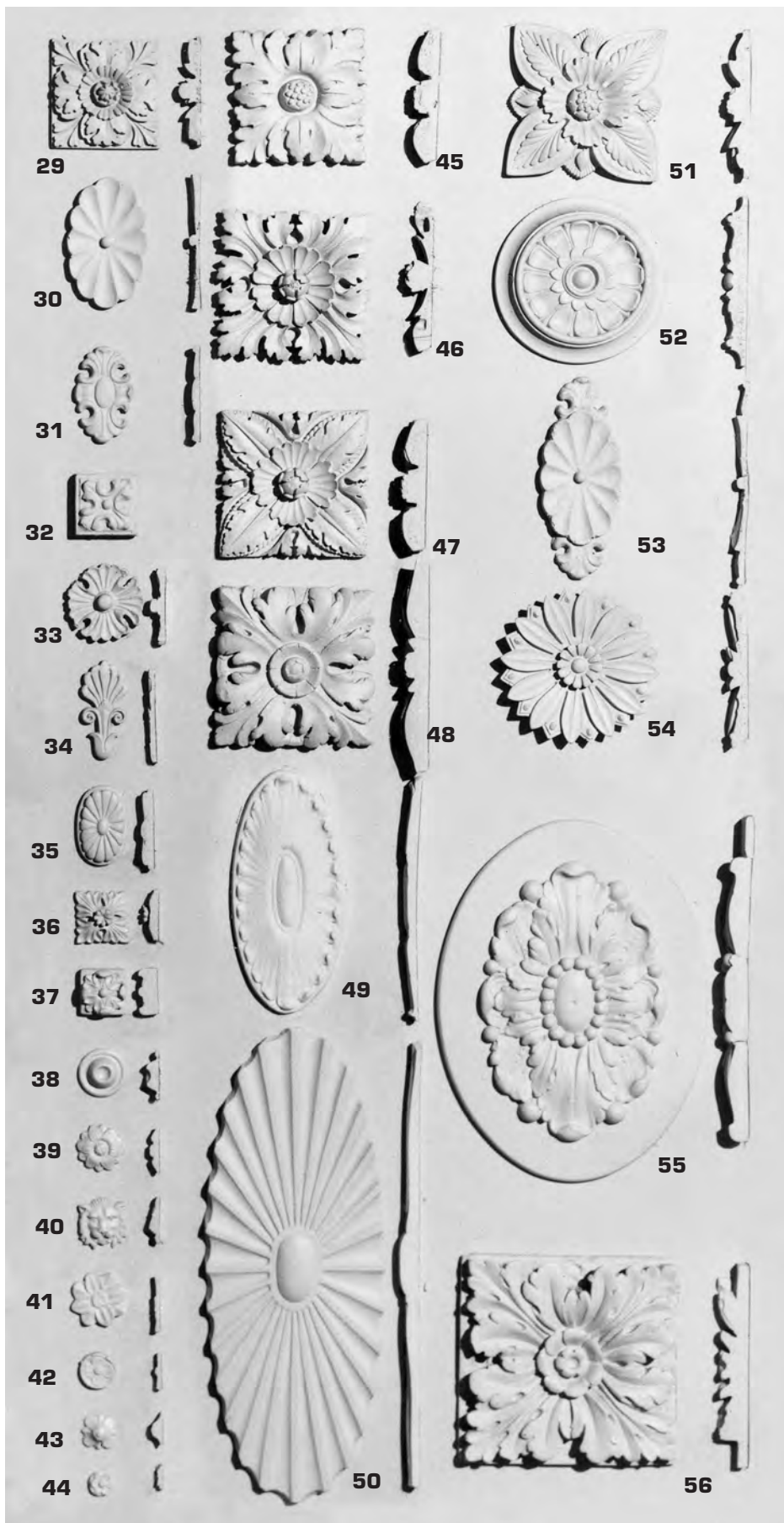
# ROSETTES & STAFF MOULDING

# Rosettes



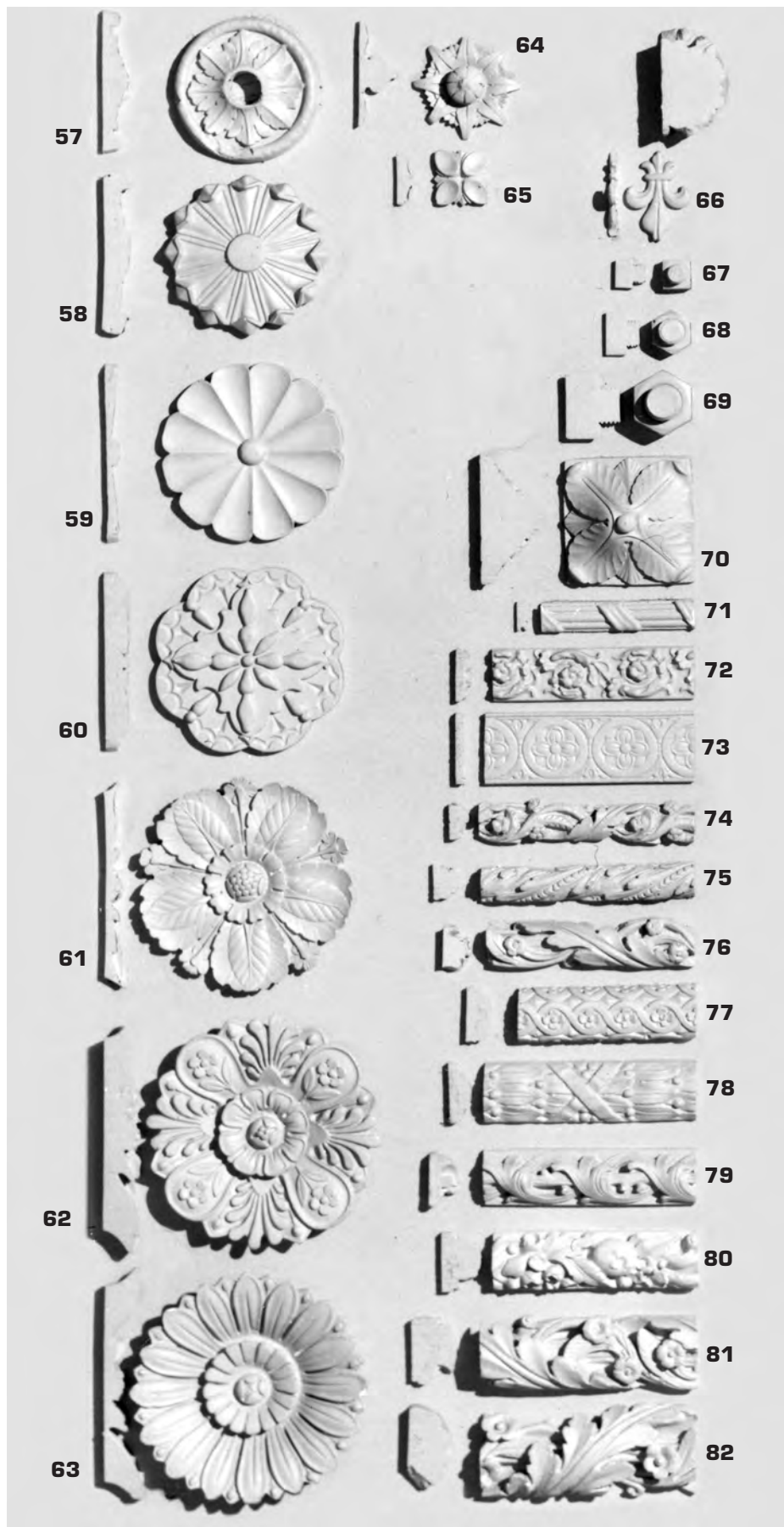
1. ROSETTE -  $\frac{7}{8}$ " x  $6\frac{1}{2}$ "
2. ROSETTE - 1" x  $8\frac{1}{4}$ "
3. ROSETTE -  $1\frac{1}{8}$ " x  $8\frac{1}{2}$ "
4. ROSETTE -  $1\frac{3}{4}$ " x  $10\frac{1}{2}$ "
5. ROSETTE -  $1\frac{3}{8}$ " x  $10\frac{1}{4}$ "
6. ROSETTE -  $1\frac{1}{8}$ " x 6"
7. ROSETTE -  $1\frac{1}{4}$ " x  $4\frac{3}{4}$ "
8. ROSETTE -  $\frac{7}{8}$ " x  $4\frac{1}{2}$ "
9. ROSETTE -  $\frac{7}{8}$ " x  $3\frac{1}{2}$ "
10. ROSETTE -  $\frac{3}{4}$ " x  $3\frac{3}{4}$ "
11. ROSETTE -  $\frac{1}{2}$ " x  $3\frac{3}{4}$ "
12. ROSETTE - 1" x  $3\frac{1}{2}$ "
13. ROSETTE - 1" x  $3\frac{1}{2}$ "
14. ROSETTE - 1" x  $2\frac{1}{4}$ "
15. ROSETTE -  $\frac{1}{2}$ " x  $2\frac{1}{4}$ "
16. ROSETTE -  $\frac{3}{4}$ " x  $2\frac{1}{4}$ "
17. ROSETTE -  $\frac{5}{8}$ " x  $2\frac{1}{2}$ "
18. ROSETTE -  $\frac{1}{4}$ " x  $2\frac{5}{8}$ "
19. ROSETTE -  $\frac{1}{2}$ " x  $2\frac{5}{8}$ "
20. ROSETTE -  $\frac{1}{2}$ " x 3"
21. ROSETTE -  $\frac{3}{4}$ " x  $2\frac{7}{8}$ "
22. ROSETTE -  $\frac{1}{2}$ " x 3"
23. ROSETTE -  $\frac{5}{8}$ " x 3"
24. ROSETTE -  $\frac{5}{8}$ " x  $3\frac{1}{2}$ "
25. ROSETTE -  $\frac{5}{8}$ " x  $3\frac{1}{2}$ "
26. ROSETTE -  $1\frac{1}{8}$ " x  $4\frac{1}{8}$ "
27. ROSETTE -  $\frac{5}{8}$ " x  $4\frac{1}{4}$ "
28. ROSETTE -  $\frac{5}{8}$ " x  $4\frac{1}{2}$ "

# Rosettes



- 29. ROSETTE - 4" x 4"  
3/4" thick
- 30. ROSETTE - 3" x 5"  
3/8" thick
- 31. ROSETTE - 2 1/4" x 3 5/8"  
1/4" thick
- 32. ROSETTE - 2 1/4" x 2 1/4"  
5/8" thick
- 33. ROSETTE - 3" diameter  
1/2" thick
- 34. ROSETTE - 1 3/4" x 3 3/4"  
3/8" thick
- 35. ROSETTE - 2" x 3"  
1/2" thick
- 36. ROSETTE - 2" x 2"  
5/8" thick
- 37. ROSETTE - 1 3/4" x 1 3/4"  
3/4" thick
- 38. ROSETTE - 1 7/8" diameter  
1/2" thick
- 39. ROSETTE - 1 7/8" diameter  
3/8" thick
- 40. ROSETTE - 2" diameter  
3/8" thick
- 41. ROSETTE - 1 7/8" x 1 7/8"  
1/4" thick
- 42. ROSETTE - 1 3/8" diameter  
1/4" thick
- 43. ROSETTE - 1 1/8" x 1 1/8"  
1/2" thick
- 44. ROSETTE - 1" diameter  
1/4" thick
- 45. ROSETTE - 5" x 5"  
7/8" thick
- 46. ROSETTE - 5 1/2" x 5 1/2"  
1" thick
- 47. ROSETTE - 5 1/2" x 5 1/2"  
1" thick
- 48. ROSETTE - 6" x 6"  
1" thick
- 49. ROSETTE - 4 1/2" x 9 3/8"  
1/2" thick
- 50. ROSETTE - 6 3/4" x 17 7/8"  
7/8" thick
- 51. ROSETTE - 5 3/4" x 5 3/4"  
5/8" thick
- 52. ROSETTE - 6 3/8" diameter  
3/4" thick
- 53. ROSETTE - 3" x 7 3/8"  
1/2" thick
- 54. ROSETTE - 6" diameter  
3/4" thick
- 55. ROSETTE - 10" x 13 3/4"  
3/4" thick
- 56. ROSETTE - 8" x 8"  
1 1/8" thick

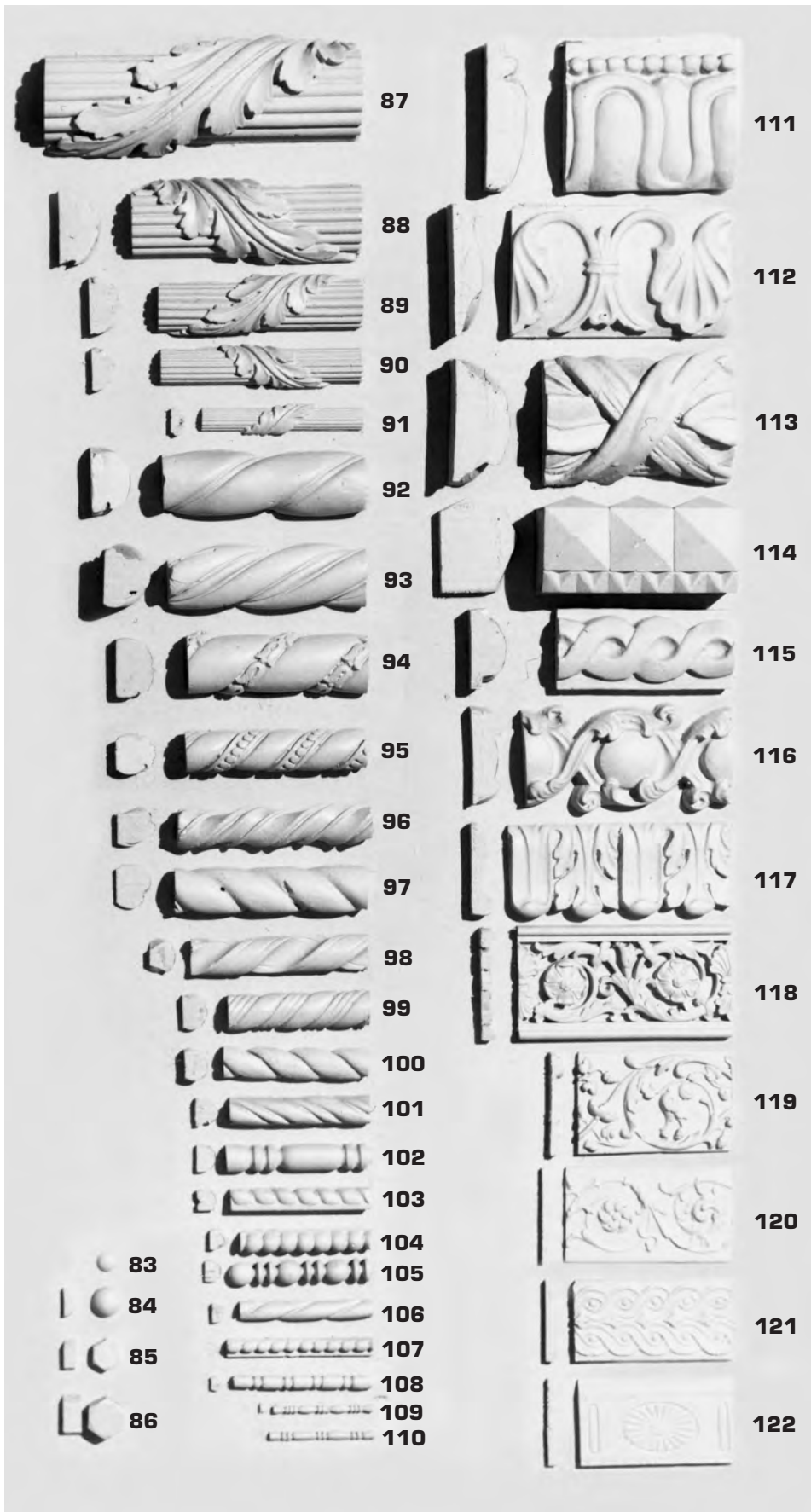
# Rosettes & Staff Mouldings



- 57. ROSETTE - 5<sup>3</sup>/<sub>8</sub>" diameter  
1" thick
- 58. ROSETTE - 6" diameter  
1" thick
- 59. ROSETTE - 6<sup>3</sup>/<sub>4</sub>" diameter  
5<sup>5</sup>/<sub>8</sub>" thick
- 60. ROSETTE - 7<sup>1</sup>/<sub>4</sub>" diameter  
7<sup>7</sup>/<sub>8</sub>" thick
- 61. ROSETTE - 8" diameter  
3<sup>3</sup>/<sub>4</sub>" thick
- 62. ROSETTE - 8<sup>3</sup>/<sub>8</sub>" diameter  
1<sup>3</sup>/<sub>8</sub>" thick
- 63. ROSETTE - 8<sup>3</sup>/<sub>4</sub>" diameter  
1<sup>1</sup>/<sub>2</sub>" thick
- 64. ROSETTE - 4" diameter  
1<sup>1</sup>/<sub>2</sub>" thick
- 65. ROSETTE - 2" x 2"  
5<sup>5</sup>/<sub>8</sub>" thick
- 66. ROSETTE - 2<sup>3</sup>/<sub>8</sub>" x 3<sup>1</sup>/<sub>8</sub>"  
3<sup>3</sup>/<sub>8</sub>" thick
- 67. NUT - 1" x 1"  
1<sup>1</sup>/<sub>8</sub>" thick
- 68. NUT - 2<sup>1</sup>/<sub>8</sub>"  
2" thick
- 69. NUT - 2<sup>1</sup>/<sub>8</sub>"  
2" thick
- 70. ROSETTE - 4<sup>3</sup>/<sub>4</sub>" x 4<sup>3</sup>/<sub>4</sub>"  
2<sup>3</sup>/<sub>8</sub>" thick
- 71. MOULDING - 1<sup>1</sup>/<sub>8</sub>" wide  
1<sup>1</sup>/<sub>2</sub>" thick
- 72. MOULDING - 1<sup>7</sup>/<sub>8</sub>" wide  
5<sup>5</sup>/<sub>8</sub>" thick
- 73. MOULDING - 2<sup>5</sup>/<sub>8</sub>" wide  
5<sup>5</sup>/<sub>16</sub>" thick
- 74. MOULDING - 1<sup>1</sup>/<sub>2</sub>" wide  
7<sup>7</sup>/<sub>8</sub>" thick
- 75. MOULDING - 1<sup>3</sup>/<sub>8</sub>" wide  
1" thick
- 76. MOULDING - 1<sup>7</sup>/<sub>8</sub>" wide  
1" thick
- 77. MOULDING - 2" wide  
1" thick
- 78. MOULDING - 2<sup>1</sup>/<sub>4</sub>" wide  
7<sup>7</sup>/<sub>8</sub>" thick
- 79. MOULDING - 2" wide  
1<sup>1</sup>/<sub>4</sub>" thick
- 80. MOULDING - 2" wide  
2" thick
- 81. MOULDING - 2<sup>5</sup>/<sub>8</sub>" wide  
1<sup>3</sup>/<sub>4</sub>" thick
- 82. MOULDING - 3<sup>1</sup>/<sub>4</sub>" wide  
1<sup>1</sup>/<sub>2</sub>" thick

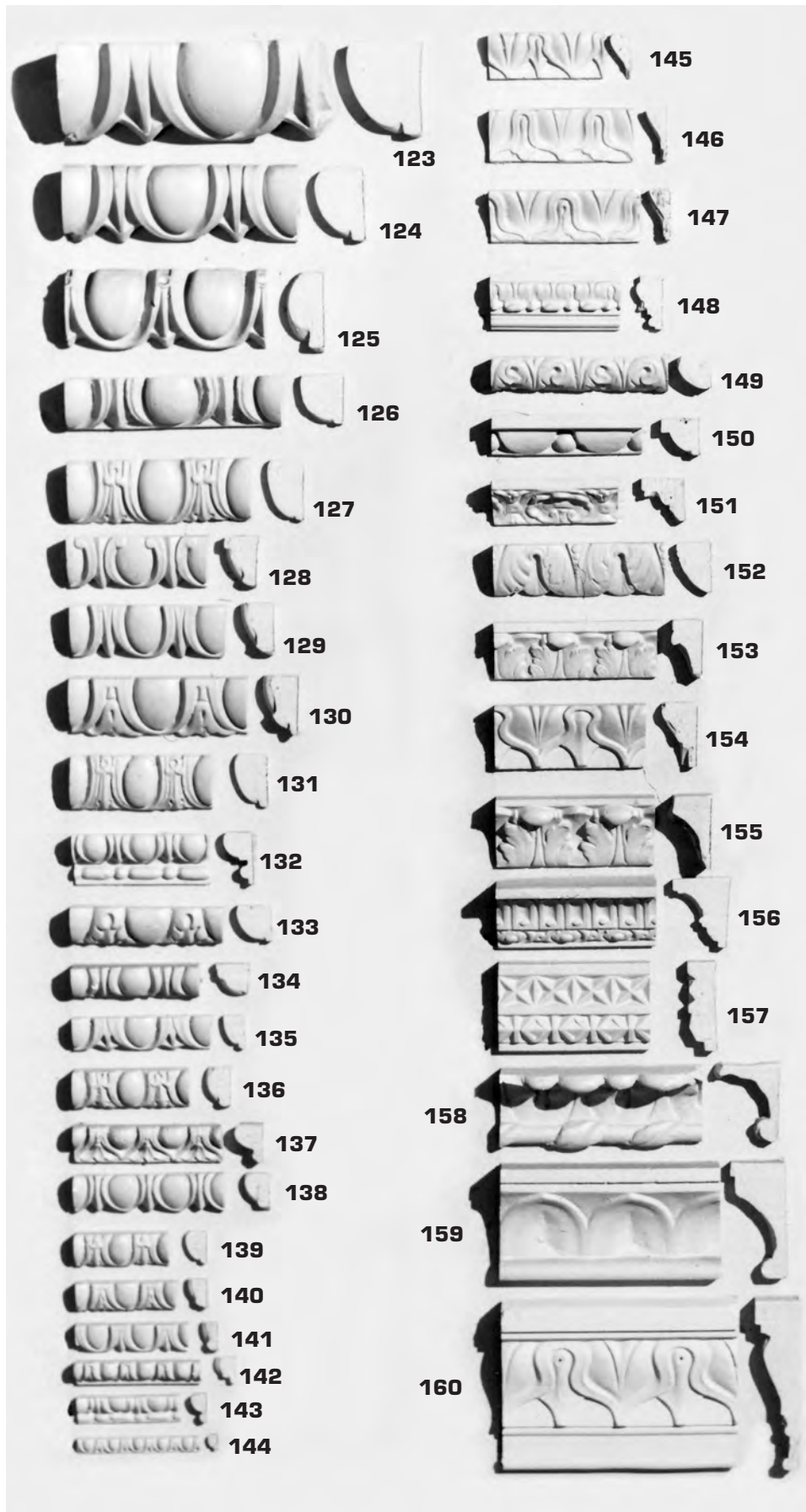


# Staff Mouldings



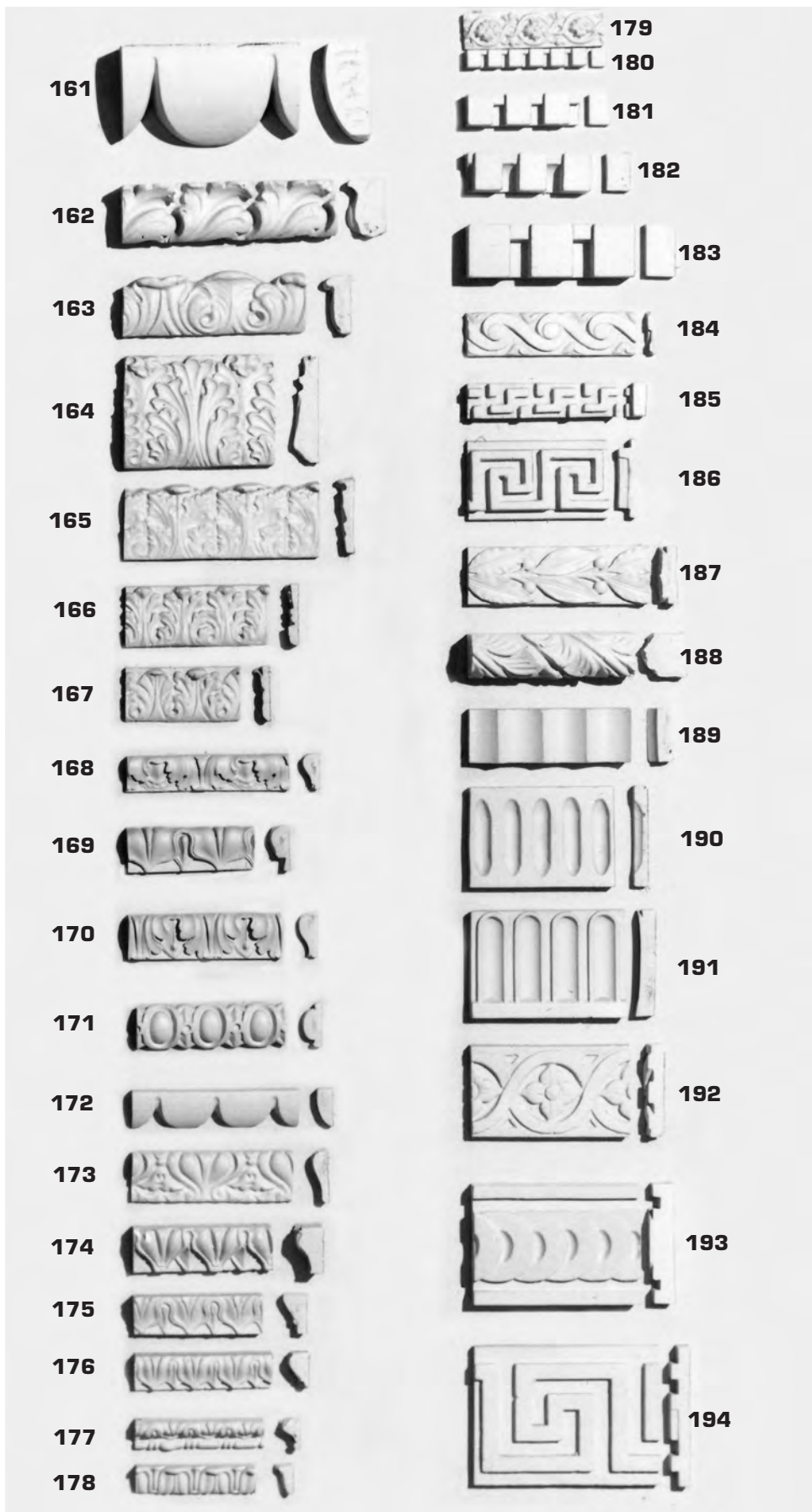
- 83. RIVETS -  $\frac{3}{4}$ " wide  
 $\frac{1}{2}$ " thick
- 84. RIVETS - 1" wide
- 85. RIVETS -  $\frac{7}{16}$ " thick  
 $\frac{6}{4}$ " wide  
 $\frac{5}{8}$ " thick
- 86. RIVETS -  $\frac{1}{2}$ " wide  
 $\frac{3}{4}$ " thick
- 87. MOULDING -  $\frac{4}{2}$ " wide  
 $\frac{2}{2}$ " thick
- 88. MOULDING -  $\frac{3}{4}$ " wide  
2" thick
- 89. MOULDING -  $\frac{2}{4}$ " wide  
 $\frac{1}{2}$ " thick
- 90. MOULDING -  $\frac{1}{2}$ " wide  
1" thick
- 91. MOULDING -  $\frac{1}{8}$ " wide  
 $\frac{5}{8}$ " thick
- 92. MOULDING -  $\frac{2}{2}$ " wide  
 $\frac{1}{4}$ " thick
- 93. MOULDING -  $\frac{2}{2}$ " wide  
 $\frac{2}{4}$ " thick
- 94. MOULDING -  $\frac{2}{2}$ " wide  
 $\frac{1}{2}$ " thick
- 95. MOULDING -  $\frac{1}{2}$ " wide  
 $\frac{5}{8}$ " thick
- 96. MOULDING -  $\frac{1}{2}$ " wide  
 $\frac{1}{2}$ " thick
- 97. MOULDING -  $\frac{1}{4}$ " wide  
 $\frac{1}{4}$ " thick
- 98. MOULDING -  $\frac{1}{8}$ " wide  
 $\frac{1}{8}$ " thick
- 99. MOULDING -  $\frac{1}{8}$ " wide  
1" thick
- 100. MOULDING -  $\frac{1}{4}$ " wide  
 $\frac{7}{8}$ " thick
- 101. MOULDING -  $\frac{1}{16}$ " wide  
 $\frac{7}{8}$ " thick
- 102. MOULDING - 1" wide  
 $\frac{3}{4}$ " thick
- 103. MOULDING -  $\frac{13}{16}$ " wide  
 $\frac{5}{8}$ " thick
- 104. MOULDING -  $\frac{3}{4}$ " wide  
 $\frac{3}{4}$ " thick
- 105. MOULDING -  $\frac{7}{8}$ " wide  
 $\frac{11}{16}$ " thick
- 106. MOULDING -  $\frac{3}{4}$ " wide  
 $\frac{1}{2}$ " thick
- 107. MOULDING -  $\frac{3}{4}$ " wide  
 $\frac{1}{2}$ " thick
- 108. MOULDING -  $\frac{1}{2}$ " wide  
 $\frac{3}{8}$ " thick
- 109. MOULDING -  $\frac{3}{8}$ " wide  
 $\frac{1}{4}$ " thick
- 110. MOULDING -  $\frac{3}{8}$ " wide  
 $\frac{1}{4}$ " thick
- 111. MOULDING -  $\frac{5}{4}$ " wide  
 $\frac{1}{4}$ " thick
- 112. MOULDING -  $\frac{5}{4}$ " wide  
 $\frac{1}{8}$ " thick
- 113. MOULDING - 5" wide  
 $\frac{2}{8}$ " thick
- 114. MOULDING -  $\frac{3}{4}$ " wide  
3" thick
- 115. MOULDING -  $\frac{3}{8}$ " wide  
 $\frac{1}{2}$ " thick
- 116. MOULDING -  $\frac{4}{8}$ " wide  
 $\frac{1}{4}$ " thick
- 117. MOULDING -  $\frac{3}{8}$ " wide  
 $\frac{7}{8}$ " thick
- 118. MOULDING -  $\frac{4}{8}$ " wide  
 $\frac{5}{8}$ " thick
- 119. MOULDING -  $\frac{3}{8}$ " wide  
 $\frac{1}{2}$ " thick
- 120. MOULDING -  $\frac{3}{8}$ " wide  
 $\frac{3}{8}$ " thick
- 121. MOULDING -  $\frac{3}{8}$ " wide  
 $\frac{1}{2}$ " thick
- 122. MOULDING -  $\frac{3}{8}$ " wide  
 $\frac{1}{2}$ " thick

# Staff Mouldings



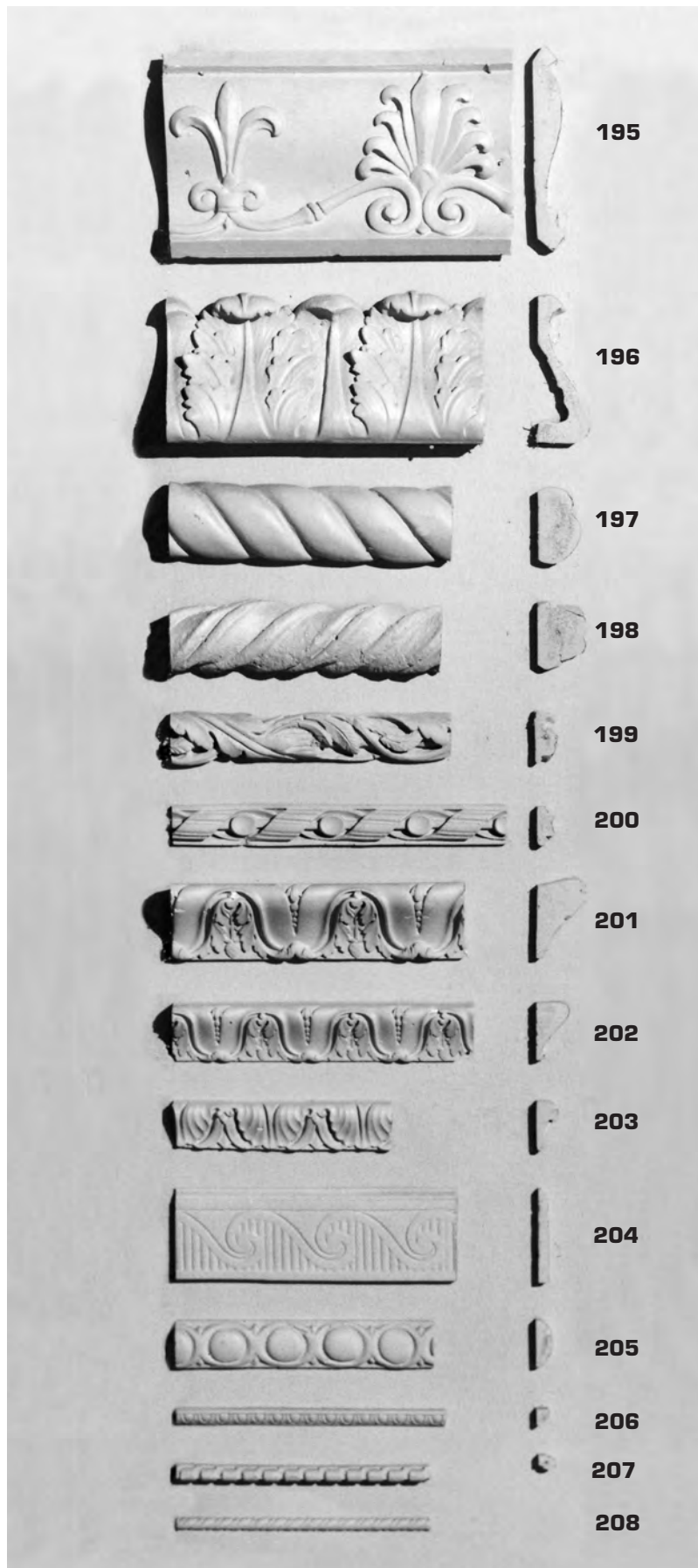
- 123. MOULDING - 3<sup>1</sup>/<sub>2</sub>" wide  
3" thick
- 124. MOULDING - 2<sup>7</sup>/<sub>8</sub>" wide  
1<sup>7</sup>/<sub>8</sub>" thick
- 125. MOULDING - 3" wide  
1<sup>3</sup>/<sub>8</sub>" thick
- 126. MOULDING - 2" wide  
1<sup>5</sup>/<sub>8</sub>" thick
- 127. MOULDING - 2<sup>3</sup>/<sub>8</sub>" wide  
1<sup>3</sup>/<sub>8</sub>" thick
- 128. MOULDING - 2" wide  
1<sup>1</sup>/<sub>4</sub>" thick
- 129. MOULDING - 2" wide  
1<sup>1</sup>/<sub>4</sub>" thick
- 130. MOULDING - 2<sup>1</sup>/<sub>4</sub>" wide  
1<sup>3</sup>/<sub>8</sub>" thick
- 131. MOULDING - 2<sup>1</sup>/<sub>8</sub>" wide  
1<sup>1</sup>/<sub>4</sub>" thick
- 132. MOULDING - 2" wide  
1" thick
- 133. MOULDING - 1<sup>1</sup>/<sub>2</sub>" wide  
1<sup>3</sup>/<sub>8</sub>" thick
- 134. MOULDING - 1<sup>1</sup>/<sub>2</sub>" wide  
1<sup>3</sup>/<sub>8</sub>" thick
- 135. MOULDING - 1<sup>1</sup>/<sub>4</sub>" wide  
7<sup>7</sup>/<sub>8</sub>" thick
- 136. MOULDING - 1<sup>1</sup>/<sub>2</sub>" wide  
1" thick
- 137. MOULDING - 1<sup>1</sup>/<sub>2</sub>" wide  
1<sup>1</sup>/<sub>16</sub>" thick
- 138. MOULDING - 1<sup>3</sup>/<sub>8</sub>" wide  
1" thick
- 139. MOULDING - 1<sup>1</sup>/<sub>4</sub>" wide  
7<sup>7</sup>/<sub>8</sub>" thick
- 140. MOULDING - 1<sup>1</sup>/<sub>8</sub>" wide  
3<sup>3</sup>/<sub>4</sub>" thick
- 141. MOULDING - 1<sup>1</sup>/<sub>8</sub>" wide  
5<sup>5</sup>/<sub>8</sub>" thick
- 142. MOULDING - 1" wide  
7<sup>7</sup>/<sub>8</sub>" thick
- 143. MOULDING - 1<sup>1</sup>/<sub>8</sub>" wide  
5<sup>5</sup>/<sub>8</sub>" thick
- 144. MOULDING - 5<sup>5</sup>/<sub>16</sub>" wide  
5<sup>5</sup>/<sub>16</sub>" thick
- 145. MOULDING - 1<sup>3</sup>/<sub>4</sub>" wide  
3<sup>3</sup>/<sub>4</sub>" thick
- 146. MOULDING - 3<sup>3</sup>/<sub>4</sub>" wide  
1<sup>1</sup>/<sub>2</sub>" thick
- 147. MOULDING - 2<sup>1</sup>/<sub>8</sub>" wide  
7<sup>7</sup>/<sub>8</sub>" thick
- 148. MOULDING - 2" wide  
1" thick
- 149. MOULDING - 1<sup>1</sup>/<sub>4</sub>" wide  
1<sup>1</sup>/<sub>4</sub>" thick
- 150. MOULDING - 1<sup>1</sup>/<sub>2</sub>" wide  
1<sup>1</sup>/<sub>2</sub>" thick
- 151. MOULDING - 1<sup>5</sup>/<sub>8</sub>" wide  
1<sup>5</sup>/<sub>8</sub>" thick
- 152. MOULDING - 2" wide  
1<sup>1</sup>/<sub>4</sub>" thick
- 153. MOULDING - 2<sup>3</sup>/<sub>16</sub>" wide  
1<sup>1</sup>/<sub>8</sub>" thick
- 154. MOULDING - 2<sup>1</sup>/<sub>2</sub>" wide  
1<sup>3</sup>/<sub>8</sub>" thick
- 155. MOULDING - 2<sup>3</sup>/<sub>4</sub>" wide  
1<sup>5</sup>/<sub>8</sub>" thick
- 156. MOULDING - 2<sup>3</sup>/<sub>4</sub>" wide  
2<sup>1</sup>/<sub>4</sub>" thick
- 157. MOULDING - 3<sup>3</sup>/<sub>8</sub>" wide  
1<sup>1</sup>/<sub>8</sub>" thick
- 158. MOULDING - 3" wide  
2<sup>1</sup>/<sub>2</sub>" thick
- 159. MOULDING - 4<sup>3</sup>/<sub>8</sub>" wide  
2<sup>1</sup>/<sub>8</sub>" thick
- 160. MOULDING - 6<sup>1</sup>/<sub>2</sub>" wide  
1<sup>7</sup>/<sub>8</sub>" thick

# Staff Mouldings

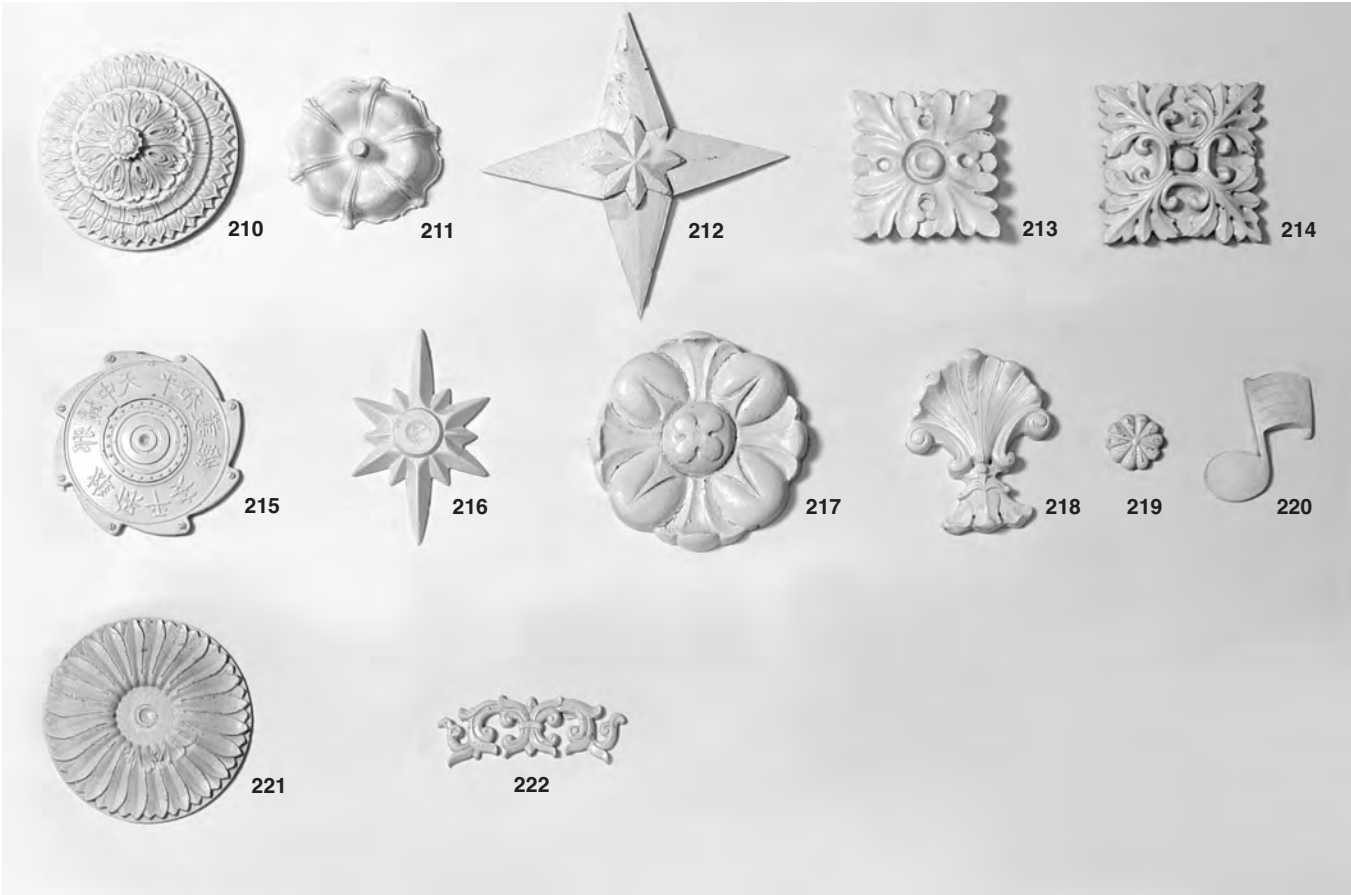


- 161. MOULDING -  $3\frac{5}{8}$ " wide  
 $1\frac{3}{4}$ " thick
- 162. MOULDING -  $2\frac{1}{8}$ " wide  
 $1\frac{3}{8}$ " thick
- 163. MOULDING -  $2\frac{1}{4}$ " wide  
 $\frac{7}{8}$ " thick
- 164. MOULDING -  $4\frac{1}{4}$ " wide  
1" thick
- 165. MOULDING -  $2\frac{7}{8}$ " wide  
 $\frac{3}{4}$ " thick
- 166. MOULDING -  $2\frac{1}{4}$ " wide  
 $\frac{1}{2}$ " thick
- 167. MOULDING - 2" wide  
 $\frac{5}{8}$ " thick
- 168. MOULDING -  $1\frac{3}{8}$ " wide  
 $\frac{5}{8}$ " thick
- 169. MOULDING -  $1\frac{3}{4}$ " wide  
 $\frac{3}{4}$ " thick
- 170. MOULDING -  $1\frac{3}{4}$ " wide  
 $\frac{5}{8}$ " thick
- 171. MOULDING -  $1\frac{5}{8}$ " wide  
 $\frac{3}{4}$ " thick
- 172. MOULDING -  $1\frac{1}{2}$ " wide  
 $\frac{5}{8}$ " thick
- 173. MOULDING -  $1\frac{7}{8}$ " wide  
 $\frac{5}{8}$ " thick
- 174. MOULDING -  $1\frac{3}{4}$ " wide  
1" thick
- 175. MOULDING -  $1\frac{3}{8}$ " wide  
 $\frac{7}{8}$ " thick
- 176. MOULDING -  $1\frac{3}{8}$ " wide  
 $\frac{3}{4}$ " thick
- 177. MOULDING -  $1\frac{1}{8}$ " wide  
 $\frac{3}{4}$ " thick
- 178. MOULDING - 1" wide  
 $\frac{3}{4}$ " thick
- 179. MOULDING -  $1\frac{3}{8}$ " wide  
 $\frac{3}{4}$ " thick
- 180. MOULDING -  $\frac{5}{8}$ " wide  
 $\frac{1}{2}$ " thick
- 181. MOULDING -  $1\frac{1}{8}$ " wide  
 $\frac{7}{8}$ " thick
- 182. MOULDING -  $1\frac{3}{8}$ " wide  
 $\frac{7}{8}$ " thick
- 183. MOULDING - 2" wide  
 $1\frac{1}{8}$ " thick
- 184. MOULDING -  $1\frac{3}{4}$ " wide  
 $\frac{3}{8}$ " thick
- 185. MOULDING -  $1\frac{1}{4}$ " wide  
 $\frac{3}{4}$ " thick
- 186. MOULDING - 3" wide  
 $\frac{3}{4}$ " thick
- 187. MOULDING -  $2\frac{3}{16}$ " wide  
 $\frac{5}{8}$ " thick
- 188. MOULDING -  $1\frac{5}{8}$ " wide  
 $1\frac{3}{4}$ " thick
- 189. MOULDING - 2" wide  
 $\frac{7}{8}$ " thick
- 190. MOULDING -  $3\frac{3}{4}$ " wide  
 $\frac{1}{2}$ " thick
- 191. MOULDING - 4" wide  
 $\frac{5}{8}$ " thick
- 192. MOULDING -  $3\frac{3}{8}$ " wide  
 $\frac{5}{8}$ " thick
- 193. MOULDING -  $4\frac{1}{2}$ " wide  
1" thick
- 194. MOULDING -  $5\frac{1}{4}$ " wide  
 $\frac{3}{4}$ " thick

# Staff Mouldings



- 195. MOULDING -  $7\frac{1}{4}$ " wide  
 $1\frac{1}{16}$ " thick
- 196. MOULDING -  $5\frac{1}{4}$ " wide  
2" thick
- 197. MOULDING -  $2\frac{3}{4}$ " wide  
 $1\frac{1}{2}$ " thick
- 198. MOULDING -  $2\frac{3}{8}$ " wide  
 $1\frac{3}{4}$ " thick
- 199. MOULDING -  $1\frac{7}{8}$ " wide  
1" thick
- 200. MOULDING -  $1\frac{3}{8}$ " wide  
 $\frac{3}{4}$ " thick
- 201. MOULDING -  $2\frac{3}{4}$ " wide  
 $1\frac{7}{8}$ " thick
- 202. MOULDING -  $2\frac{1}{8}$ " wide  
 $1\frac{1}{8}$ " thick
- 203. MOULDING -  $1\frac{3}{4}$ " wide  
 $\frac{3}{4}$ " thick
- 204. MOULDING -  $3\frac{3}{8}$ " wide  
 $\frac{3}{8}$ " thick
- 205. MOULDING -  $1\frac{3}{4}$ " wide  
 $\frac{5}{8}$ " thick
- 206. MOULDING -  $\frac{9}{16}$ " wide  
 $\frac{1}{2}$ " thick
- 207. MOULDING -  $\frac{1}{2}$ " wide  
 $\frac{9}{16}$ " thick
- 208. MOULDING -  $\frac{7}{16}$ " wide  
 $\frac{1}{4}$ " thick



- 210. 5 1/2" x 2"
- 211. 4 1/4" x 1 3/4"
- 212. 8 3/8" x 1"
- 213. 4" x 1 1/2"
- 214. 4 1/4" x 3/4"
- 215. 5 1/4" x 1 1/2"
- 216. 6" x 3 3/4" x 1 1/2"
- 217. 6" x 5/8"
- 218. 5" x 4" x 3/4"
- 219. 1 1/2" x 1/4"
- 220. 3 1/2" x 3/8"
- 221. 5 1/2" x 5/8"
- 222. 1 3/4" x 5" x 1/4"

# Ornamental Scrolls



L1 & R1. 16" x 10 1/2"  
 L2 & R2. 9 1/2" x 6"  
 L3 & R3. 6" x 4"  
 4. 2 1/2" x 5"

5. 3 1/2" x 7 1/2"  
 L6 & R6. 8" x 7 1/2"  
 L7 & R7. 12" x 3 1/2"  
 L8 & R8. 5" x 3"

9. 4 1/2" x 10"  
 10. 2" x 11 1/2"  
 L11 & R11. 11" x 8"  
 L12 & R12. 12" x 5"

L13 & R13. 12" x 4 1/2"  
 14. 6" x 9"  
 15. 4" x 6 1/2"  
 L16 & R16. 14" x 10"

17. 6 1/2" x 8"  
 18. 11" x 17"

# Architectural Ornaments



- 1. 4<sup>1</sup>/<sub>2</sub>" x 9<sup>1</sup>/<sub>2</sub>"
- 2. 4<sup>1</sup>/<sub>2</sub>" x 10<sup>1</sup>/<sub>2</sub>"
- 3. 8" x 18<sup>1</sup>/<sub>2</sub>"
- 4. 12" x 2<sup>1</sup>/<sub>2</sub>"
- 5. 15" x 6"
- 6. 11" x 6"
- 7. 15" x 13"
- 8. 11" x 6"
- 9. 7" x 7"
- 10. 16" x 11"
- 11. 11" x 7"
- 12. 16" x 11"
- 13. 9" x 6"
- 14. 6" x 13"

# MEDALLIONS & FRIEZES



# Friezes



Please contact for sizes and details



Please contact for sizes and details

## Medallions



Please contact for sizes and details

# BRACKETS & CORBELS

## Corbels



**361**

8 $\frac{1}{2}$ " wide  
11" tall  
5 $\frac{1}{2}$ " deep



**362**

4 $\frac{1}{2}$ " wide  
12" tall  
3 $\frac{1}{2}$ " deep



**363**

10" wide  
14" tall  
11" deep



**364**

2 $\frac{5}{8}$ " wide  
5 $\frac{1}{2}$ " tall  
1 $\frac{1}{2}$ " deep



**365**

2 $\frac{1}{2}$ " wide  
5 $\frac{1}{2}$ " tall  
1 $\frac{1}{2}$ " deep

## Corbels



**366**

5½" wide  
6¼" tall  
3⅞" deep



**367**

8" wide  
26" tall  
4¾" deep



**368**

8" wide  
14" tall  
6" deep



**369**

9" wide  
24" tall  
4¾" deep



**370**

5½" wide  
18" tall  
5¼" deep



**371**

15" wide  
30" tall  
11½" deep

# Corbels



**372**

4" wide  
10" tall  
2<sup>7</sup>/<sub>8</sub>" deep



**373**

4<sup>1</sup>/<sub>2</sub>" wide  
5<sup>1</sup>/<sub>2</sub>" tall  
3" deep



**374**

6" wide  
18<sup>1</sup>/<sub>2</sub>" tall  
9" deep



**375**

8<sup>1</sup>/<sub>2</sub>" wide  
12" tall  
9<sup>1</sup>/<sub>2</sub>" deep



**376**

12" wide  
22" tall  
9" deep



**377**

5<sup>5</sup>/<sub>8</sub>" wide  
6<sup>1</sup>/<sub>2</sub>" tall  
2<sup>3</sup>/<sub>4</sub>" deep

## Corbels



**378**

5" wide  
10<sup>1</sup>/<sub>4</sub>" tall  
4" deep



**379**

6<sup>1</sup>/<sub>4</sub>" wide  
8<sup>1</sup>/<sub>2</sub>" tall  
7<sup>1</sup>/<sub>2</sub>" deep



**380**

top:  
4<sup>1</sup>/<sub>4</sub>" dia.  
6" tall  
base:  
7"x7"



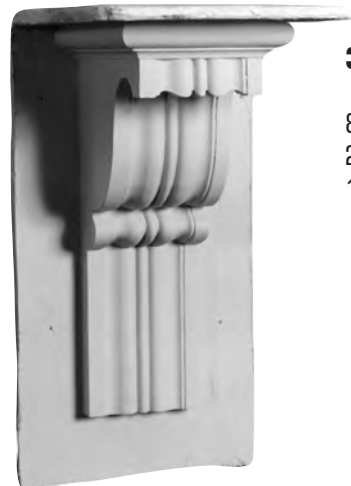
**381**

9" wide  
25" tall  
6" deep



**382**

15<sup>1</sup>/<sub>2</sub>" wide  
11<sup>1</sup>/<sub>2</sub>" tall  
6" deep



**383**

8<sup>3</sup>/<sub>4</sub>" wide  
20" tall  
10<sup>1</sup>/<sub>2</sub>" deep



## Corbels



**384**

5" wide  
9<sup>3</sup>/<sub>4</sub>" wide  
9" deep



**385**

4<sup>1</sup>/<sub>2</sub>" wide  
8" tall  
4<sup>3</sup>/<sub>4</sub>" deep



**386**

8" wide  
10" tall  
5<sup>1</sup>/<sub>2</sub>" deep



**387**

4<sup>7</sup>/<sub>8</sub>" wide  
9" tall  
4<sup>5</sup>/<sub>8</sub>" deep



**388**

6<sup>1</sup>/<sub>2</sub>" wide  
13<sup>3</sup>/<sub>4</sub>" tall  
4" deep



**389**

8" wide  
14" tall  
9" deep

## Corbels



**390**

8" wide  
17 $\frac{1}{8}$ " tall  
5 $\frac{3}{4}$ " deep



**391**

11" wide  
37" tall  
18" deep



**392**

7" wide  
18" tall  
6 $\frac{1}{2}$ " deep



**393**

11 $\frac{1}{2}$ " wide  
19" tall  
6" deep



**394**

10 $\frac{1}{2}$ " wide  
36" tall  
8 $\frac{3}{4}$ " deep



**395**

11" wide  
40" tall  
11" deep

## Corbels



**396**

14" wide  
11½" tall  
9" deep



**397**

5⅞" wide  
30" tall  
4¼" deep



**398**

4¾" wide  
12" tall  
5" deep



**399**

7⅜" wide  
11" tall  
4¾" deep



**400**

9¼" wide  
9½" tall  
6¼" deep



**401**

7" wide  
8¾" tall  
4" deep

## Corbels



**402**

7" wide  
10" tall  
4" deep



**403**

9" wide  
10" tall  
7" deep



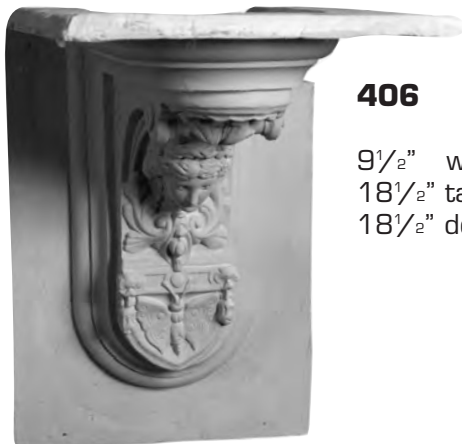
**404**

2<sup>3</sup>/<sub>4</sub>" wide  
4<sup>7</sup>/<sub>8</sub>" tall  
2<sup>3</sup>/<sub>8</sub>" deep



**405**

6<sup>1</sup>/<sub>4</sub>" wide  
10<sup>1</sup>/<sub>2</sub>" tall  
7" deep



**406**

9<sup>1</sup>/<sub>2</sub>" wide  
18<sup>1</sup>/<sub>2</sub>" tall  
18<sup>1</sup>/<sub>2</sub>" deep



**407**

11<sup>5</sup>/<sub>8</sub>" wide  
10<sup>3</sup>/<sub>4</sub>" tall  
8" deep

# Corbels



**408**

11½" wide  
37½" tall  
13¾" deep



**409**

13½" wide  
54" tall  
10⅞" deep



**410**

4⅞" wide  
9" tall  
5" deep



**411**

13⅝" wide  
40" tall  
10¾" deep



**412**

15½" wide  
37" tall  
10⅜" deep



**413**

10" wide  
14⅝" tall  
15" deep

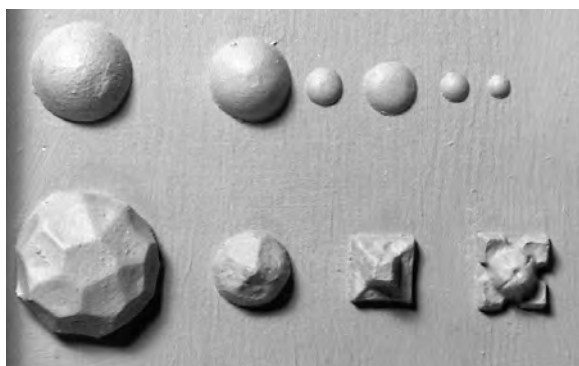
CAST  
RIVETS & BOLTS

## Cast Rivets & Bolts



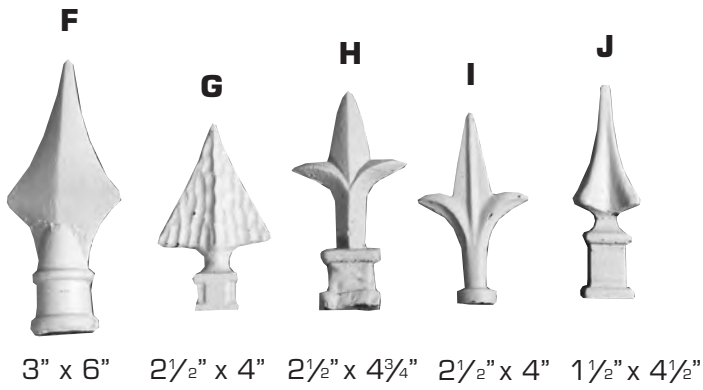
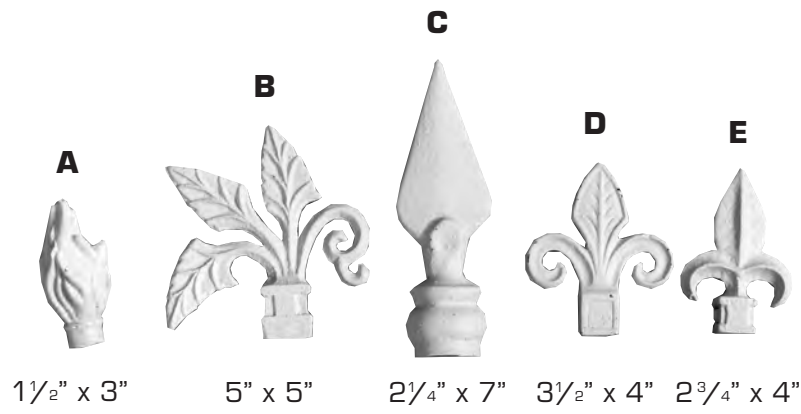
**534**  
**CAST BOLT HEADS**  
CALL FOR SIZES

**535**  
**CAST NUT AND BOLT**  
CALL FOR SIZES



**536**  
**INDIVIDUAL CAST RIVETS**  
CALL FOR SIZES

# Spears & Railroad Spike



**532  
SPEARS**  
CAST IN RESIN



**533  
RAILROAD SPIKE**  
6" CAST



# SPECIALTY & CUSTOM



**523** CELTIC CROSSES 43" x 91" sheet size



**524** LEAVES 36" x 78"



**525** BOOKS 30" x 71" sheet size



**528** 55 GALLON DRUM LID



**529** MANHOLE COVER 27" diameter



**FIRE HYDRANT**

There are different sizes and styles of hydrants.



**RADIATOR**

There are different sizes and styles of radiators.

# CAPITALS & COLUMNS

## Capitals & Columns



Please contact for sizes and shapes

## Capitals & Columns



Please contact for sizes and shapes



**Fabrication & Staff Shop 818.777.2337**

**Universal Studios  
Fabrication & Staff Shop**

**100 Universal City Plaza  
Bldg. 4250-1  
Universal City, CA 91608**

**tel 818.777.2337 | fax 818.866.5810 | mobile 818.427.1596  
email: [staff.shop@nbcuni.com](mailto:staff.shop@nbcuni.com)**

**Please visit our website for product updates  
[Universalstudioslot.com](http://Universalstudioslot.com)**

